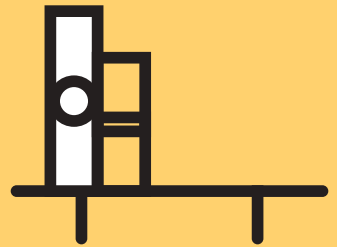


ANNAMRITA FOUNDATION



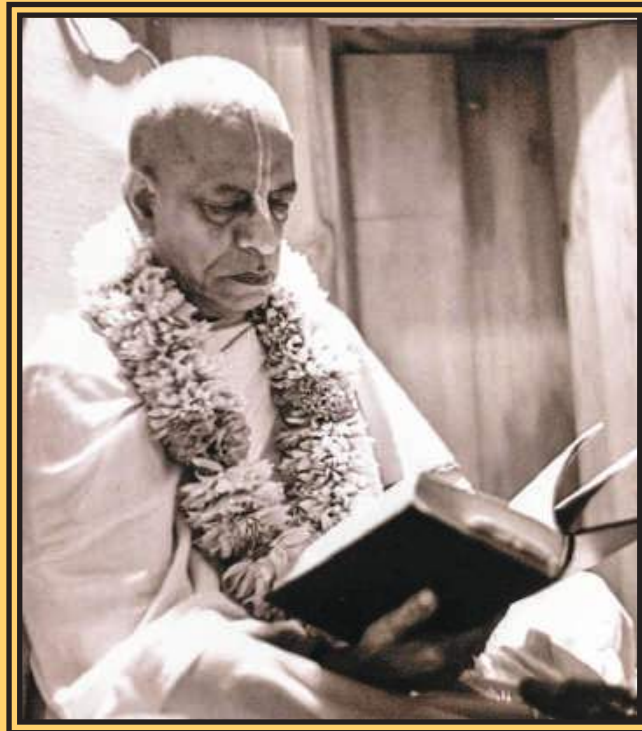
Hungry to Happy

ANNUAL REPORT 2016-17



Dedicated to His Divine Grace A.C. Bhaktivedanta Swami Prabhupada

Founder Acharya of International Society for Krishna Consciousness



**“If one is prepared to accept His mercy unlimitedly, then He is prepared to give it unlimitedly.”**

We are deeply indebted to His Divine Grace A.C. Bhaktivedanta Swami Prabhupada for being the guiding force behind Annamrita. It is because of his trust, faith and belief in the power of ‘giving’ that we continue to serve food and happiness every single day throughout the year, year after year.

# Hungry to Happy

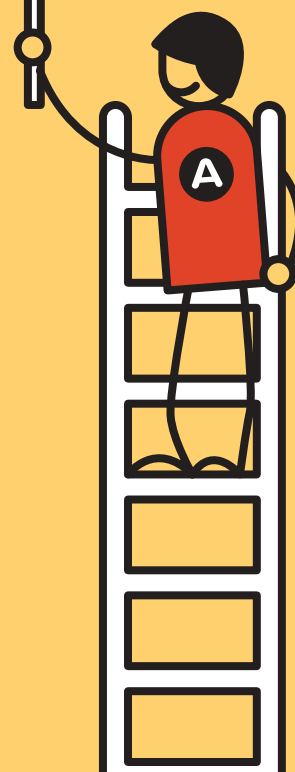
Facilitating education for all  
by eliminating hunger

Annamrita has twin missions: Eradicating Malnutrition and Promoting Literacy. Our food movement has ensured that over a million hungry children eat wholesome, nutritious meals at schools every day. We know that a happy tummy makes a happy mind. Where a large part of India struggles to get one meal a day, we have taken the onus to liberate children even the cycle of poverty and illiteracy. Our 'Satvik Ahaar' meets the daily nutrition requirement of children in formative years, ensuring healthy growth and development.

What started as a local activity 13 years ago, has turned into a national initiative which is no longer restricted to government-aided and non-aided schools. We are also providing meals to patients and those who need it most. Being the largest food-serving NGO in the country and the self-reliant organisation, we do not shy away from adding our own resources to the contribution we receive from the government. For us, nutrition, hygiene and taste matter the most. Our hi-tech kitchens satiate hunger at a magnanimous level.

Guided by the determination to offer the best and to see happy faces, we measure our growth to that of the schools. Every child returning to school the next day, the next session and then the next year, makes us happy and proud. It is an achievement for us to have transformed hungry children into happy individuals.

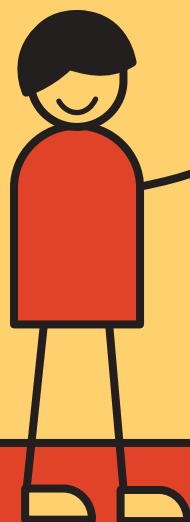
**1.001mm**  
Meals per day in 2017



**900**  
Meals per day in  
2004



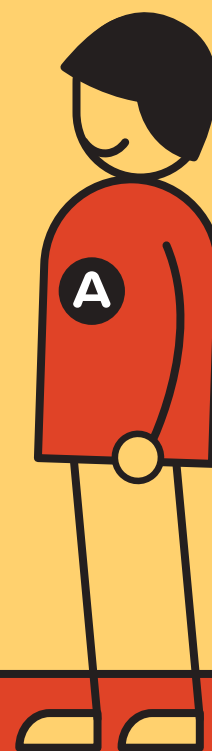
**₹2**  
Our  
contribution  
per child



**₹450**  
Funding cost  
per child per year

# What's inside

<b>Sr. No.</b>	<b>Contents</b>	<b>Pg. No.</b>
1	Journey so far	03
2	Message from Mr. Ajay Piramal	04
3	Message from Mr. Kushal Desai	05
4	How we are eliminating hunger	06
5	Our Inspiration	07
6	Our Capacity and Capability	08
7	Key Highlights of FY 2016-17	10
8	What our goals are for the coming year	12
9	Our Supporters	14
10	Board of Trustees	16
11	Events we participated in	18
12	Annamrita Food Process	22
13	How our work was acknowledged	30
14	Finance and Accounts	31



# 1 – Journey so far

From a local kitchen to national midday meal provider

## 2004

- We started from a small room cooking food for 900 children

## 2005

- ISKCON starts a non-profit, non-religious and non-sectarian public charitable trust to provide midday meals to municipal, government-aided and non-aided schools
- New kitchens at Tardeo and Mira Road opened

## 2006

- New kitchens opened at Palghar, Nigdi, Faridabad and Jaipur

## 2007

- New kitchens opened in Ujjain and New Delhi

## 2008

- New kitchens opened at Nellore, Kurukshetra and Rajamundhry

## 2009

- New kitchen started at Kadappa

## 2010

- New kitchens opened at Ranganara, Gadda and Palwal

## 2011

- Opened new kitchens at Wada, Jamshedpur and Gurgaon

## 2012

- New kitchen opened at Aurangabad
- West Bengal government grants land to set up a Midday Meal kitchen in Kolkata.
- Annamrita starts its association with Rashtriya Chemicals & Fertilizers Ltd., to serve meals to underprivileged students in non-aided schools in Chembur, Mankhurd and Govandi areas. Today, this collaboration helps serve around 10,400 students with meals

- Annamrita launches new kitchen in Jharkhand in association with Tata Steel and the Government of Jharkhand
- Rotary honours Dr. RadhaKrishna Das, the Government Administrative Advisor, Annamrita, with its highest award – the Vocation Excellence Award

## 2013

- Annamrita bags ISO 22000:2005 certification for Palghar, Wada, Mira Road, Aurangabad and Tardeo kitchens
- Dr. Abdul Kalam appreciates the work done by ISKCON Food Relief Foundation

## 2014

- Annamrita approached by the government to start serving meals in government hospitals

## 2015

- ISKCON Food Relief Foundation celebrates Anand Utsav at Jaipur to commemorate the start of a new kitchen
- Annamrita wins IMC Ramkrishna Bajaj National Quality Award
- Annamrita provides meals to children with special needs

## 2016

- Annamrita's new kitchen at Cooper Hospital, Mumbai, inaugurated by Honorable Chief Minister of Maharashtra Shri Devendra Fadnavis
- Annamrita provides meals to TB afflicted patients in Sewri T.B. Hospital
- Annamrita wins IMC Ramkrishna Bajaj National Quality Awards for Excellence for the second time
- Annamrita partnered with Kotak Education Foundation to provide meals to nearly 4,000 non-aided government school children in Mumbai
- Annamrita provides meals to OPD patients in TATA Cancer Hospital

## 2017

- Successful renewal of ISO 22000:2005 for Palghar, Wada, Mira Road and Tardeo kitchens
- Annamrita partners with Cuddles Foundation to provide meals to cancer afflicted children

## 2 – Message from Mr. Ajay Piramal

Chairman of the Annamrita Advisory Committee

### Hunger is global, solutions must be local

The vast majority of the world's 795 million hungry people live in developing countries. India bears a large share of this burden with 190 million in hunger, which is increasingly out of sync with its rise as a financial power. The country's dismal ranking at 100 out of 119 on the Global Hunger Index dampens its achievements as many Indians struggle to get two square meals a day.

Those impacted most by want of food are children, the young minds India is banking on to scale new heights. ISKCON Food Relief Foundation's Annamrita project was started 13 years ago to address this critical gap by ensuring underprivileged children have access to nutritious food at schools. Its midday meal scheme plays an important role in nation building by incentivising parents to send their children to school, and equips the students to break out of the vicious cycle of poverty through the education and vocational skills needed to become part of India's success story. The programme also lays a stronger foundation for gender equality by boosting girl-child enrolment.

Annamrita's food movement has grown from strength to strength, from a small kitchen in 2004 that prepared meals for 900 children to serving 1.4 million underprivileged children in 6,500 schools across seven states in India through 20 centralised kitchens. Over a million young children in the country now have a shot at bettering their future and of those around them, owing to the dedication and determination of the Annamrita staff.

However, given the scale of the problem of hunger in the country, this is not enough. There is a pressing need to do more. Annamrita has set a sights on reaching out to more children from non-aided schools who deserve these meals the most but don't have access to them. This includes increasing the outreach to cover neighbouring areas like Navi Mumbai, where students can gain much-needed nutrition from midday meals while continuing their education.

Those impacted most by want of food are children, the young minds India is banking on to scale new heights.

Annamrita has also expanded its scope to serve patients at government hospitals – a first for any NGO. The Annamrita kitchen in hospitals is a joint project of Municipal Corporation of Greater Mumbai, Suman Ramesh Tulsiani Charitable Trust and ISKCON Food Relief Foundation, and was inaugurated by none other than the Honourable Chief Minister of Maharashtra, Mr. Devendra Fadnavis. Hygienic and nutritious meals for breakfast, lunch, evening snacks and dinner are now served at a subsidised cost to approximately 1,800 indoor patients.

I strongly believe that with the continued support of the government, social sector, corporates and individuals, it is possible to help bring a lot more millions into the fold of inclusive growth. Many challenges have surfaced along our journey, but they have never dulled Annamrita's spirit to serve, and with your assistance it will keep growing stronger as ever.



## 3 – Message from Mr. Kushal Desai

### Incoming Chairman, Annamrita Foundation

#### **Removing barriers to success through a balanced, nutritious diet.**

There is a saying you become what you eat. Also, there are many books 'you become what you need' describing the wonders of a sanctified meal-food prepared with care and devotion. These ideas underline the efforts of ISKCON Food Relief Foundation's Annamrita, which provides simple, easy to digest and nutritious food to those who need it most.

But Annamrita's impact goes far beyond satisfying hunger. In this era, the barriers to success have changed. Literacy is now one of the key drivers of an individual and the nation's growth trajectory. By drawing children, who would have otherwise been sucked into the survival race, to school, Annamrita is helping bridge the divide between a life of low-end work and one of fulfilment.

Among the challenges facing Annamrita is that of serving meals to over a million children every day, consistently, without giving in to inflationary pressures. It is a measure of the project's well-managed and executed processes that-despite steep rise in the value of goods, equipment and transport in the 13 years since the service began-the annual cost per child is still ₹ 450.

Another key challenge is ensuring required nutrition within a limited quantity so that children can consume the meal in a go. This is done by cooking in ghee, which, according to leading nutritionist Rujuta Diwekar, helps in the growth of both the muscle and brain tissue among children, while taking advantage of their robust metabolism and satiating their appetite. The other ingredients used, from vegetables to spices, also help deliver a balanced diet.

It is heartening to see positive impact on social causes, not only through individuals and foundations, but also from corporates. I see the wave of giving within people and I am glad it is gaining momentum. I, on behalf of the Annamrita

family, thank everyone who has been part of this meritorious journey of accomplishments – our corporate partners, government officials, foundations, NGOs, Rotarians and individual donors. Annamrita has achieved multiple milestones throughout its 13-year trajectory. Starting from a small room in 2004, Annamrita today stands proud as the second largest midday meal programme in India.

After achievements in the space of providing midday meals to school children, Annamrita expanded its work to serve healthy and nutritious food to municipal hospital patients. This year, the project started providing hygienic food to the indoor patients of Hindu Hriday Samrat Balasaheb Thackeray Medical College, Dr. R. N. Cooper Municipal General Hospital, The TB Sewri Group of Hospitals, as well as cancer patients in Tata Memorial Hospital. Annamrita has set up a state-of-the-art kitchen, which provides sanctified meals to approximately 1,800 indoor patients. Another feather in our cap, and another requirement that we are so glad to be able to fulfil.

Annamrita has a dream of reaching out to more non-aided schools, not only in Mumbai, but also to Navi Mumbai schools where nutritious meals are most required but not available. I am sure with your continued support even this dream will be realised soon.

The Annamrita journey has seen many crests and troughs and has grown with the combined efforts of the society, our people, the patrons and the blessings of Srila Prabhupada. I thank you all from the bottom of my heart, offering my sincere gratitude.

**Annamrita is helping bridge the divide between a life of low-end work and one of fulfilment.**

## 4 – How we are eliminating hunger

Nurturing happy souls with the power of food and education

Annamrita acknowledges the critical impact nutrition and education have on young, impressionable minds. To that end, we serve balanced meals to nurture their bodies, minds and souls.

Our endeavour is to make education a priority by providing midday meals to children in government-aided as well as non-aided schools across India. Through our healthy, tasty and wholesome meals, we help school children fight hunger and malnutrition while ensuring attendance and enthusiasm.

Annamrita is a project of ISKCON Food Relief Foundation (IFRF). We started in August 2004 with feeding 900 children on the first day, and today serve 0.87 million meals every single day through our 19 ISO certified hi-tech kitchens across India.

Our belief in 'you are what you eat' has helped thousands of children get education. It's a journey from hungry to happy!

We also serve nutritious meals to low-income group patients at hospitals and healthcare centres.

### Our Vision

Serve nutritious and sanctified food as pure as nectar to the underprivileged children of India

### Our Mission

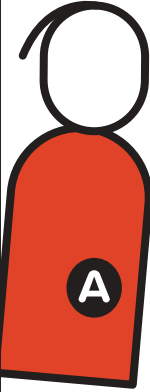
To liberate underprivileged children from the vicious cycle of poverty and illiteracy by serving them wholesome nutritious meals





## 5 – Our Inspiration

### Our Genesis



Years ago, Srila Prabhupada, Founder Acharya of ISKCON, witnessed a group of young children fighting with street dogs over scraps of leftover food. Saddened by what he saw, he instructed his followers – ‘No one within a 10-mile radius of ISKCON centres should go hungry.’



The Government of India launched a strategic programme called the Midday Meal Scheme in 1995. ISKCON Food Relief Foundation saw this as an opportunity to provide children with the right nutrition to support their education through its Annamrita project.

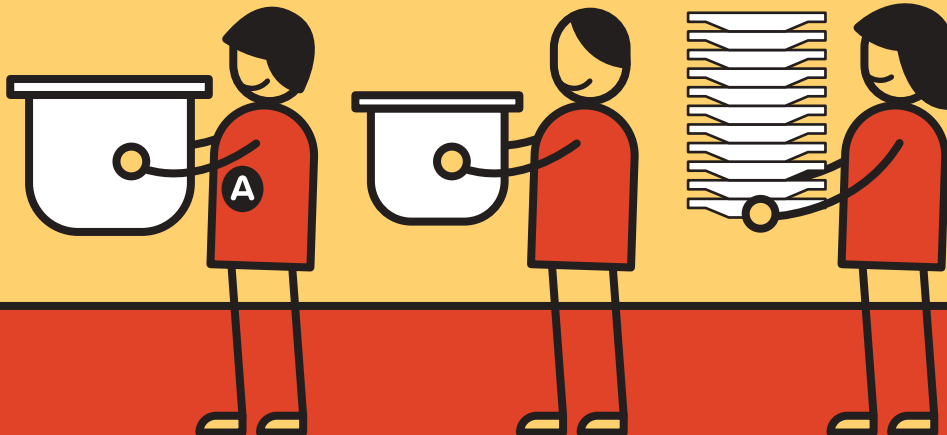
### What drives us

#### The purpose of implementing the scheme is

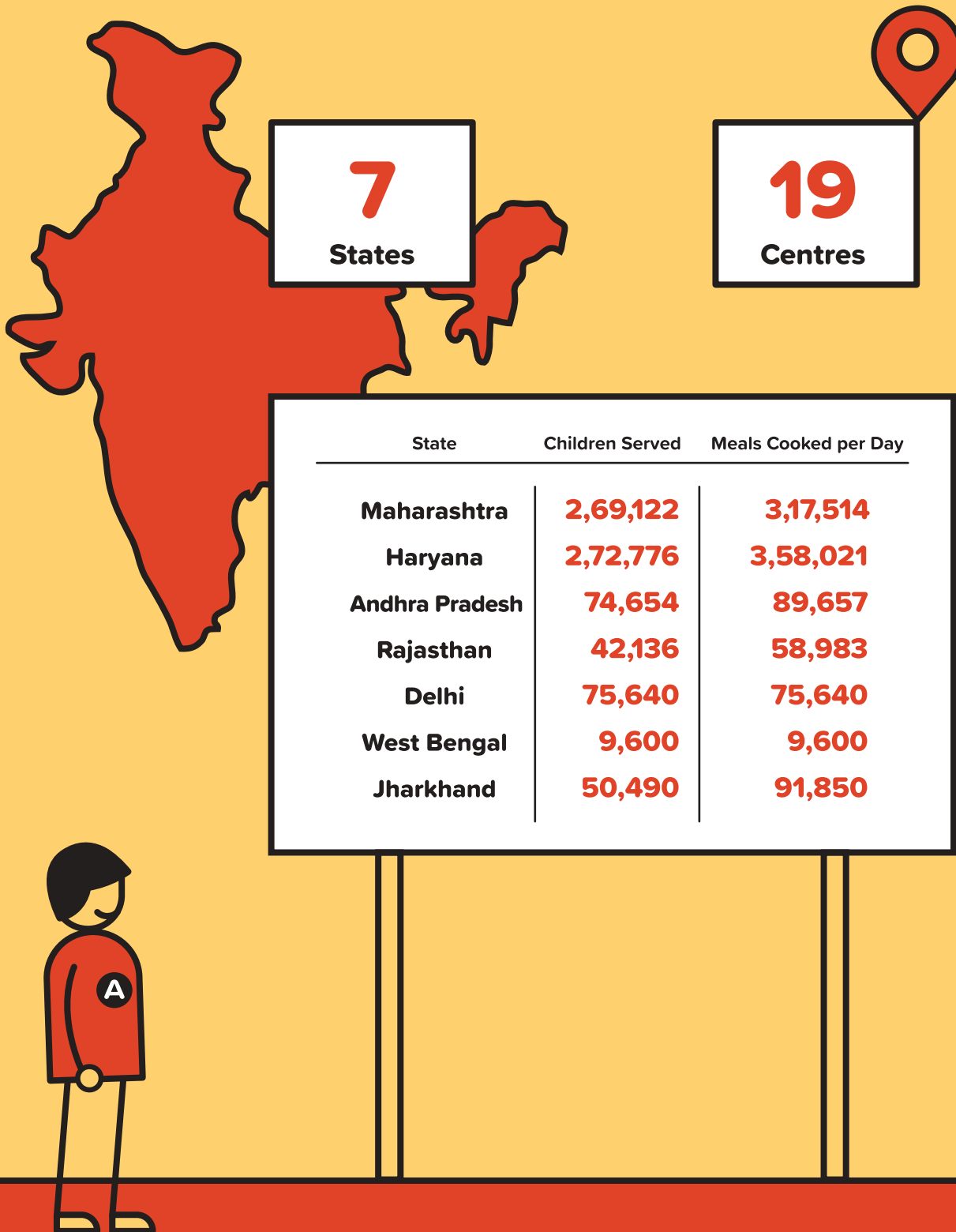
- Help underprivileged school children fight malnutrition and hunger.
- Share the financial burden of families by providing healthy meals daily for their children.
- Facilitate the government in increasing enrolments in its schools and reduce dropout rates.

#### We also provide nutritious meals to

- Anganwadis
- Hospitals
- Expecting and lactating mothers
- Special schools
- Homeless
- Runaway children
- Orphanages
- Disaster relief
- Subsidised meals for underprivileged



## 6 – Our Capacity and Capability



Our belief in the power of sanctified food, backed by the relentless efforts of Annamrita staff nationally, has propelled us to become among the largest midday meal programmes in the country.



**“Amazing operation. Thanks to the team and thanks for all that you are doing to help children in Mumbai and all over India.”**

Whitney Mayer, The Hershey Company  
Manager, Social Innovation



## 7 – Key Highlights of FY 2016-17

How we impacted lives this year

### Reached out to non-aided schools

This was a year of expansion for Annamrita, when we extended both our vision and scope. The number of children we can reach is limited by the government-aided schools in the regions we operate. To take our work further, we made an effort to make midday meals available to children in non-aided schools in the Vashi area.

### We provide 'healthy wholesome meals' to patients and medical staff in state and municipal hospitals

1. HBT Medical College and Dr. R. N. Cooper Municipal General Hospital, Mumbai
2. T. B. Hospital, Mumbai
3. Tata Cancer Hospital, Mumbai
4. We will soon begin serving in Lokmanya Tilak Municipal General Hospital, Mumbai

# 600

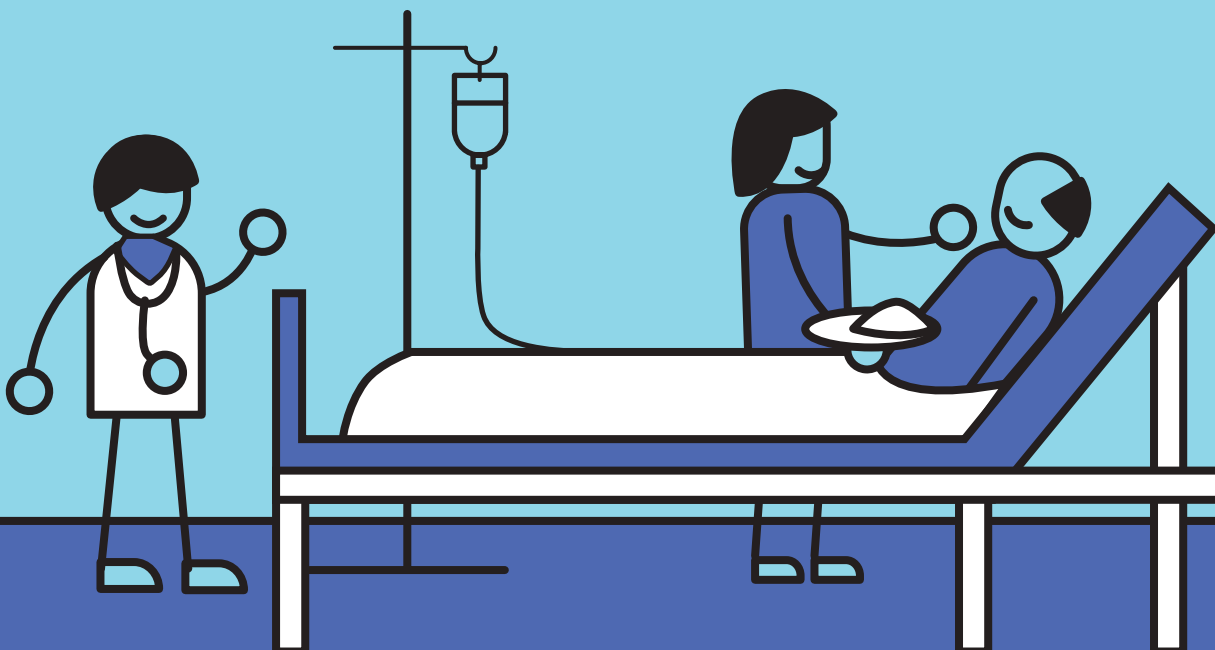
### Meals for indoor patients at Cooper Hospital

### Served food at hospitals

Annamrita started serving in T. B. Hospital Sewri (Sewri Hospital) from 5<sup>th</sup> May, 2016. Currently, we are serving full-time meals in two hospitals: Dr. R. N. Cooper Municipal Hospital and Sewri hospital. We have also started serving to the patients of Tata Cancer hospital from November 2016. The hospitals are served through a dedicated kitchen set up in the hospital itself, the first of which was set up at Cooper Hospital. At Cooper, seeing the quality of food served at the Annamrita kitchen, the resident doctors requested us to prepare meals for them too. A separate service was started for the medical staff, which bears testament to the draw of Annamrita's wholesome, sanctified food and its credo-hungry to happy.

# 1,200

### Meals for indoor patients of T. B. Municipal Hospital



**Opened a new kitchen**

Apart from the kitchens at Tardeo and Mira Road in Mumbai a new 9,000 sq. ft. kitchen in 25,000 sq. ft. plot area was acquired and later equipped at Wada in Thane. This kitchen has a serving capacity of 95,000 meals a day.

# 9,000

**Sq. ft. kitchen space added**

# 95,000

**Meals/day capacity added**

**The Joy of Devotion**

On the special occasion of ISKCON completing 50 years, Karuna Productions decided to make a documentary titled, 'The Joy of Devotion', in which they highlighted the activities carried out by ISKCON Food Relief Foundation. One of the final events of the ISKCON 50<sup>th</sup> anniversary year, the 85-minute film has been called 'one of the best films ever produced about ISKCON' by the ISKCON's Communications Minister Anuttama Das.

Titled 'The Joy of Devotion,' the film was created and directed by Hungarian-born, US-based professional filmmaker Krisztina Danko, (Ph.D.) of Karuna Productions. Krisztina and her large international crew of film professionals, including many devotees, worked on the documentary for over two-and-a-half years, hopping around the globe to shoot in five continents and dozens of locations. They conducted interviews in North and South America, Europe, Russia, India, Africa and Australia. Dr. Kriszinta Danko, Executive Director of Karuna Production, visited the Annamrita project and was awed by the scale of operations and the massive impact and outreach it has in such a modest manner.

Our kitchens serve a variety of meals for students and patients. They comprise of chappatis, two sabjis, dal, rice, diet meal and whole meals. We curate special meals for diabetic patients and those with dietary restrictions.

These are some of our dishes.

**THE ANNAMRITA KITCHEN**

## Chawli Usal Bhat Khichdi

**GRAINS & PULSES**

RICE

CHAWLI

CHILKA MOONG DAL

GROUNDNUT

**SPICES**

GARAM MASALA

HALDI POWDER

HING POWDER

JEERA

RAI

USSAL MASALA

**OTHER ITEMS**

GHEE

SALT

TOMATO PASTE

**VEGETABLES**

GINGER

CARROT

BOTTLE GOURD

KADI PATTI

POTATO

CAPSICUM

## 8 – What our goals are for the coming year

### The way forward

The legacy of compassion and service of His Divine Grace

A.C. Bhaktivedanta Swami Prabhupada, Founder Acharya of International Society of Krishna Consciousness, is kept alive through various projects, including ISKCON Food Relief Foundation's Annamrita midday meal programme and the service to patients at state-run hospitals.

#### **Eliminate hunger**

The overwhelming support we have received from the government, social organisations, corporates and individuals has propelled us to consider ways to reach out to even more children and needy whose lives can be improved through nutrition and regular meals. Though Annamrita already serves 1.4 million children across seven states, vast numbers of children still go hungry, with India remaining at the bottom of the Global Hunger Index. Our mission, hence, is to keep growing and reaching out until no one remains unfed and no child is denied education for want of food.

### **Keep growing and reaching out until no one goes hungry**

#### **Additional 55,000 children**

As the first step, we are expanding our operations to Mumbai's satellite city, Navi Mumbai, where 5,000 children in 17 aided schools will be served midday meals from Annamrita's kitchen. From next year, we hope to add another 55,000 children from non-aided schools in the city to our meal programme.

### **We hope to add another 55,000 children from non-aided schools**

#### **Expand scope**

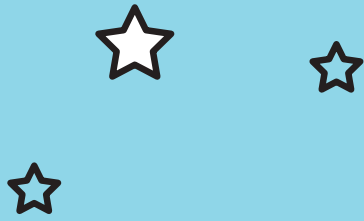
The number of government-aided schools are limited, and are not expected to increase substantially over time. Annamrita, hence, has to look for ways to expand its scope outside the government's midday meal scheme, though it continues to remain the mainstay of our operations. To this end, Annamrita is looking to serve meals to children in non-aided schools in and across Mumbai. Though the cost of service increases substantially in the absence of state-provided rice and funds, it is an imperative we just cannot overlook, and one which aligns with our mission of food for all.

### **Annamrita is looking to serve meals to children in non-aided schools in and across Mumbai**

#### **Higher-level students**

Another project under consideration is to serve children from 8<sup>th</sup> up to the 12<sup>th</sup> standard, the most crucial years in a child's education who are presently not covered under the Midday meal scheme.

### **Serve children from 8<sup>th</sup> up to the 12<sup>th</sup> standard with midday meals**



**More kitchens**

Annamrita also plans to expand its operations in hospitals by setting up more dedicated kitchens in the coming year. This will help us serve more patients around those kitchens. Our immediate target is to start serving in Lokmanya Tilak Municipal Hospital (Sion hospital).

We have grown organically expanding our reach steadily with the help of donors and dedicated staff who are willing to serve. We will continue our mission this year to move our children and needy from hungry to happy.

**“Extremely inspiring and heart-warming to see the beautiful work being done at Annamrita.”**

Jyoti Chadha and Aparna Chand, Cuddles Foundation (Annamrita, in association with Cuddles Foundation, is serving cancer-affected children at Wadia, Sion and Borivali hospitals, catering to over 600 children and over 400 patients).

**THE ANNAMRITA KITCHEN**

**Matki Usal Bhat  
Khichdi**

**GRAINS & PULSES**

RICE

CHILKA MOONG DAL

MATKI

GROUND NUT

**SPICES**

DHANIYA POWDER

GARAM MASALA

HALDI POWDER

HING POWDER

JEERA

RAI

USSAL MASALA

**OTHER ITEMS**

GHEE

SALT

TOMATO PASTE

**VEGETABLES**

ADRAK

CARROT

DUDHI

KADI PATTI

POTATO

CAPSICUM

## 9 – Our Supporters

People and institutions who have made our work possible

Annamrita is grateful to the central government and various state governments for their continued and valued support in implementing the midday meal programme across the nation. The government provides us with rice and basic cooking charges, and the funds that we raise from corporates, individual donors, trusts and foundations helps us in seamless functioning.

Reaching and serving across the country has been possible with the help of the donors who generously extended their support to our cause in FY 2016-17. Below is a detailed list of our supporters. We cannot thank them enough.

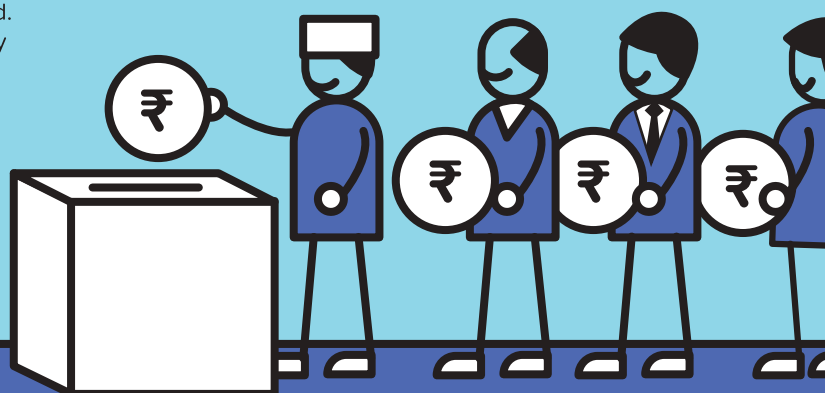
### Individual

A. Narayan  
Ajay Piralal  
Banwari Lal Pasari  
Chandur S. Changrani  
Dhiren Shah  
Dr. Kawaljit Bhatiya  
Falak Ami Thanawala  
Farhad Nariman Palia  
Gaurav Kapadia (HUF)  
Himatlal N. Shah  
Hiral Raichura  
Hital R. Meswani  
Hiten Harshadrai Mehta  
Jalaj Ashwin Dani  
Kirit Mathurdas Mehta  
Minal Mahendra Mehta  
N. Jayendran  
N. V. Tyagarajan  
Naganath Sundaresan  
Narendra Kumar Mohatta  
Parth Seth  
Piyush K. Khaitan  
Preeti Nimesh Shah  
Rahul Jhaver  
Rajesh Khanna  
Ranganathan Rajagopalan  
Sandeep Shah  
Shridhar Iyer  
Siddhesh Karne  
Smita Parekh  
Suresh Thadani  
Virendra A. Mittal

### Corporate

Aasan Corporate Solutions Pvt. Ltd.  
Apar Industries Ltd.  
Arofine Polymers Pvt. Ltd.  
ATEQ Systems Analytic India Pvt. Ltd.  
Aurangabad Electricals Ltd.  
B L A Coke Pvt. Ltd.  
Bajaj Auto Ltd.  
Balaji Enterprises  
Banggreen Holdings Pvt. Ltd.  
Bharuka Construction  
Blue Cross Laboratories Pvt. Ltd.  
Calcutta Export Company  
Cera Sanitaryware Ltd.  
Concast (India) Ltd.  
EMU Lines Pvt. Ltd.  
Endress + Hauser (I) Automation  
Instrementation Pvt. Ltd.  
Enernoc Energy Intelligences  
Software Pvt. Ltd.  
Fuchs Lubricant Pvt. Ltd.  
Fujifilm Sericol India Pvt. Ltd.  
General Insurance Corporation of India  
Great Software Laboratory Pvt. Ltd.  
Greaves Cotton Ltd., Aurangabad  
Gulf Polymers FZE  
Happy Valley Developers  
HDFC Bank Pvt. Ltd.  
Heinz India Pvt. Ltd.  
I G Superabrasives India  
IDBI Capital Market Services Ltd.  
Joshi Management Consultancy  
Karun Carpets Pvt. Ltd.

Khemka Glass Products Pvt. Ltd.  
Kraftwares (India) Ltd.  
Link Intime India Pvt. Ltd.  
M/s. Pushpak Steel Industries Pvt. Ltd.  
Magma Fincorp  
Maharashtra Hybrid Seeds Co. Ltd.  
Mahyco Monsanto Biotech  
Mmodal Global Services Pvt. Ltd.  
Morganite Crucible Ltd.  
Motilal Oswal Securities Ltd.  
N. K. Realtors Pvt. Ltd.  
Oasis Shipping Pvt. Ltd.  
PackSys Global (India) Pvt. Ltd.  
Premsons Motor Udyog Pvt. Ltd.  
Radiant Indus Chem Pvt. Ltd.  
Rajiv Plastics Pvt. Ltd.  
Rashtriya Chemicals and Fertilizers Ltd.  
Riddhymic Technoserve LLP  
Samsara Shipping Pvt. Ltd.  
SBI Funds Management Pvt. Ltd.  
Shapoorji Pallonji & Company Pvt. Ltd.  
Skoda Auto India  
Sri Krishna Pharmaceuticals Ltd.  
Srijan Realty Pvt. Ltd.  
Taraben Laherchand Shah Foundation  
Timken Foundation of Canton  
Vansum Industries







### Trusts and Foundations

Bombay Mid-Town Rotary Trust  
 Charities Aid Foundation India  
 International ASSC for Human Values  
 Kotak Education Foundation  
 Lalit Sheela Daga Foundation  
 Maharashtra Foundation  
 Manju – Jaman Shah Foundation  
 Motilal G. Charitable Trust  
 Nalanda Charitable Foundation  
 Rotary Club of Bombay Queens Necklace Charitable Trust  
 Rotary Club of Bombay Sea Face Charities Trust  
 Rotary Club of Deonar Mumbai Charity Trust  
 Rotary District 3140 – TRF District Grant  
 Sahachari Foundation  
 Sheth Govindjee Madhowjee Charitable Trust  
 Shree Venkateshwar Somani Charitable Trust  
 Shri Nand Foundation  
 Sir Vithaldas Damodar Thackersey Charitable Trust  
 The Bombay Seacoast Rotary Foundation  
 Union Bank Social Foundation Trust  
 YMCA International House

### Government Support

Government of India  
 Government of Delhi  
 Government of Maharashtra  
 Government of Rajasthan  
 Government of Haryana  
 Government of Jharkhand  
 Government of Andhra Pradesh

### THE ANNAMRITA KITCHEN

## Vatana Usal Bhat Khichdi

#### GRAINS & PULSES

RICE  
 WHITE PEAS  
 YELLOW MOONG DAL  
 GROUND NUT

#### SPICES

DHANIYA POWDER  
 GARAM MASALA  
 HALDI POWDER  
 HING POWDER  
 JEERA  
 RAI  
 RED CHILLY POWDER

#### OTHER ITEMS

GHEE  
 SALT  
 TOMATO PASTE

#### VEGETABLES

ADRAK  
 PUMPKIN  
 CARROT  
 GREEN MIRCHI  
 KADI PATTI  
 POTATO  
 CAPSICUM



# 10 – Board of Trustees

## Incoming Board of Trustees

### Mr. Kushal N. Desai

Chairman & Managing Director,  
Apar Industries Ltd.

### Mr. Yogesh Chadha

Administrative Advisor and Trustee,  
ISKCON Food Relief Foundation Trustee

### Mr. Sanjiv Maheshwari

CFO and General Partner,  
Basil Capital Partners

### H.G. Rishi Kumara Das

Trustee, ISKCON Food Relief  
Foundation

### Mr. Sandeep Gupta

Partner with Sanjay B Gupta & Co.  
Chartered Accountants

### Mr. Kunjan Gandhi

Senior Partner with Thacker  
Butala Desai, Firm of Chartered  
Accountants

### Mr. Sanjay Tikku

Programme Director of Midday  
Meals – Delhi, Rajasthan and Jarkhand,  
Convenor of the Central Committee and  
Trustee, ISKCON Food  
Relief Foundation

### Mr. Rajendra Kumar Pujari

Programme Director of Midday Meals,  
Maharashtra and Trustee,  
ISKCON Food Relief Foundation

### H.G. P. Satya Gopinath Das

Member of the Central Committee  
& Trustee, ISKCON Food Relief  
Foundation

## Outgoing Board of Trustees

### H.H. Bhakti Charu Swami

Chairman and Trustee,  
ISKCON Food Relief Foundation

### H.H. Gopal Krishna Goswami

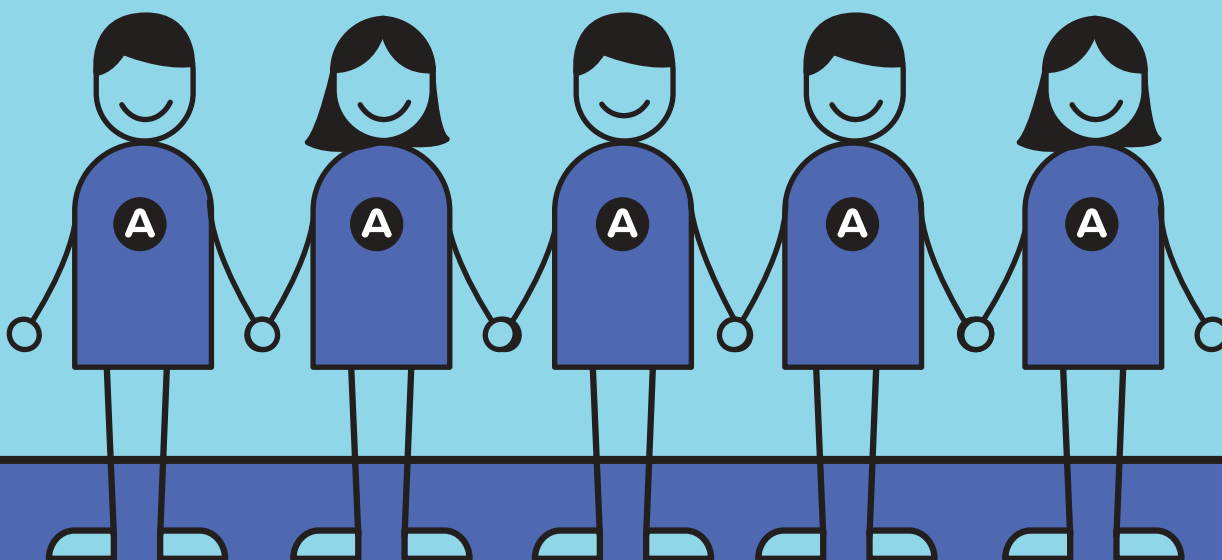
Trustee,  
ISKCON Food Relief Foundation

### H.G. Revati Raman Das

Trustee,  
ISKCON Food Relief Foundation

### H.G. Devakinandan Das

Trustee,  
ISKCON Food Relief Foundation



## Advisory Committee

### Mr. Ajay Piramal

Chairman,  
Piramal Group & Shriram Group

### Mr. Rajesh Khanna

Managing Director,  
Arka Capital Advisors Pvt. Ltd.

### Mrs. Archana Chandra

CEO,  
Jai Vakeel Foundation &  
Research Centre

### Dr. Swati Piramal

Vice Chairperson,  
Piramal Enterprises

### Mr. Vivek Asrani

Managing Director,  
Kaymo Fastener Company

### Mr. Samir Somaiya

Chairman,  
Somaiya Trust

### Mrs. Sangita Jindal

Chairperson,  
JSW Foundation

### Mr. Rajeev Srivastava

Managing Partner,  
Basil Capital Partners

## Steering Committee

### Mr. Vijay Shah

ED & COO,  
Piramal Enterprises

### Mrs. Vita Jalaj Dani

Director,  
Dani Finlease Ltd. and Geetanjali  
Trading and Investments Pvt. Ltd.

### Mrs. Ashu Khanna

Director, Arka Capital,  
Advisors, Pvt. Ltd.

### Mrs. Bijal Meswani

Project Supporter

### Mr. Paresh Parasnis

CEO,  
Piramal Foundation

### Mr. Sanjiv Maheshwari

CFO & General Partner,  
Basil Capital Partners

### Mrs. Noopur K. Desai

CSR, Programme Director,  
Apar Industries

### Rtn. Sanjiv Mehta

Rotary Club of Mumbai  
Queen's Necklace

## Central Committee

### Dr. Ravindra Khatanhar

Administrative Advisor

### Mr. Sanjay Tikku

Programme Director, Delhi  
Rajasthan and Jharkhand

### H.G. Satya Gopinath Das

Programme Director, Andhra Pradesh

### H.G. Dhananjaya Krishna Das

Programme Director, Haryana &  
Uttar Pradesh

### Mr. Sandeep Gupta

Programme Director, Madhya Pradesh

### Mr. Rajendra Pujari

Programme Director,  
of Midday Meals – Maharashtra

# 11 – Events we participated in

Spreading Annamrita’s message





### Responsible Business Awards by World CSR Congress

Responsible Business Awards by World CSR Congress was held on 23<sup>rd</sup>-24<sup>th</sup> June, 2016, at Taj Lands End, Mumbai. The CSR Congress united over 130 countries to celebrate leadership in building a better society. Annamrita was glad to participate in the event. We had an interactive stall, with a chance to participate in the Awards functions.

### National CSR Conclave 2016

Indian Institute of Corporate Affairs (IICA) along with CSR consulting firm Sattva hosted the National CSR Conclave at BSE Mumbai in June 2016 with senior government, corporate and NGO officials. The attendees included Dr. Bhaskar Chatterjee -DG & CEO, IICA, and Mr. Ashish Kumar Chauhan – MD & CEO, BSE. Annamrita was glad to be part of the forum.

### IDBI Capital Sponsors Vehicles for Annamrita

IDBI Capital Markets & Securities Ltd. (IDBI Capital) sponsored three meal delivery vehicles for Annamrita. These vehicles will ply across various areas of Mumbai providing hot, nutritious meals to underprivileged children. The senior management team of IDBI Capital handed over the vans to Annamrita. On an average, 18,000 children will receive meals daily thanks to these vehicles and we are grateful to IDBI Capital for the gesture.

### Banggreen Holdings Pvt. Ltd. supports Annamrita

Mr. Viresh Kothari, Director in Banggreen Holdings Pvt. Ltd., Mumbai, started a trust which has contributed to several schemes in the fields of education, healthcare and water conservation in rural areas. The Banggreen team visited Annamrita's Tardeo kitchen as well as a school at Mumbai Central. They enjoyed serving the children meals and interacting with them.

### Annamrita Nigdi kitchen re-inauguration

Annamrita Nigdi kitchen completed 10 years in July 2016. It started with 3,000 children and is now sponsoring meals for 35,000 children in the Nigdi and Pimpri areas of Pune. Attendees for their re-inauguration function included Mr. Dinesh Waghmare-Pimpri Chinchwad Municipal Commissioner, Mr. Chetan Bujbal-PCMC Education Board Chairman, and Mr. Rohini Kumar-ISKCON Nigdi Temple President.

### Independence Day celebrations

Independence Day celebrations were held across branches by Annamrita, which served tri-coloured rice in schools along with a sweet. The Aurangabad kitchen celebrated with fun activities for staff as well as the school children. Children enjoyed the tiranga pulav and we also conducted a medical check-up camp in which around 80 employees participated.

### Gitanjali Jewels partners with Annamrita for World Deaf Day

The Gitanjali Group partnered with Annamrita on World Deaf Day to provide meals to around 100 specially abled kids at The Mumbai Institution for the Deaf & Mute. The Guest of Honor for the event was Miss Ankita Shorey-Femina Miss India International 2011. The children, who were served khichdi and sheera by Miss Shorey, were thrilled.

### Annamrita Aurangabad celebrates Sneh Bhojan

Sneh Bhojan' or 'feast of love', is a project of the state government undertaken by the school education department to introduce variety under the midday meal scheme. The Bajaj Group celebrated Sneh Bhojan day with Annamrita Aurangabad by sponsoring semi-insulated meal delivery vehicles for the project. As part of the Sneh Bhojan Aahar programme fruits are now being included by Aurangabad as part of their menu. Aurangabad started serving fruits to children in Aurangabad city schools. So now totally 45,000 children get avla, orange and sweet lime (mosambi) as part of their diet.

### #Flaunttofeed & IFBA2016 Awards

Vikhroli Cucina and FBAl Dialogues came together on 10<sup>th</sup> December for Indian Food Blogger's Association Awards at J.W. Marriott Juhu, Mumbai. Mrs. Swati Rathi, Marketing Head of Godrej Appliances, spoke about the #FlauntToFeed campaign and the simple way of sponsoring a meal through Instagram. We thank her for showing how social media can be used for social good.

### SBI Funds Management

SBI Funds Management one of the largest financial institutions in India advising various financial institutions, pension funds, and local and international asset management companies. SBI MF has been supporting Annamrita for the last 4 years and we are glad of their timely assistance. This year as well SBI MF sponsored 12 delivery vehicles for transporting Annamrita meals in Maharashtra, Jharkhand and West Bengal area.

### VFORUM 2016

VMware is a global leader in cloud infrastructure and business mobility. Their Annual event, VFORUM, is the largest local Cloud and IT industry event of its kind in Southern hemisphere. For the third year in a row, Annamrita has been the Charity Partner for VFORUM 2016 held in Mumbai in October. They sponsored meals for 5,12,500 children.

### Daan Utsav

Annamrita celebrated Daan Utsav with 15 organisations across Mumbai, during which major corporate houses like Piramal, Godrej, Mr. Ram Capital, Equity Master, Showbiz Entertainment, Novartis, Motilal Oswal Securities Ltd., Smith & Nephew, Vendiman, DSM, Axis Bank and Abbott hosted khichdi drives, carried out collection campaigns and conducted various activities within their offices to create awareness for Annamrita project.

### Axis Bank Foundation visits Annamrita

Axis Bank Foundation organised the Daan Utsav in October 2016 wherein employees of Axis Bank and the subsidiaries of Axis Bank supported Annamrita by sponsoring meals for underprivileged children through Vendiman. Employees of Axis Bank Foundation and Axis Capital also visited the Annamrita kitchen and served meals to the children in one of the schools.

### Artha Forum

Artha Forum – Earn with Integrity Spend with Compassion, was held at BSE on 17<sup>th</sup> November, 2016. Speakers included Mr. Ashish Chauhan – CEO of Bombay Stock Exchange, Mr. Ajay Piramal-Chairman, Piramal Industries, Mr. Pravin Pardeshi – Principal Secretary, Maharashtra and H.H. Radhanath Swami – Author & Spiritual Leader. Annamrita was the official Charity Partner for the Artha Forum.

### Kraft Heinz India Christmas Celebrations

Christmas is the season to spread joy and cheer. Our sponsor Kraft Heinz India graciously hosted a Christmas party for our kids this year as well, spreading happiness among 500 children and faculty members of Ghanshyamdas Podar Vidyalaya, Chakala. The children sang, danced and recited poetry with Santa Claus, who distributed goodies to all of them.

### International Clown Festival

The International Clown Festival India had a performance at St. Andrews on 27<sup>th</sup> December and thanks to Axis Asset Management Company Ltd., some of our school children from BPE Society school, Bandra, got a chance to attend the show. The children were excited as this was the first time they have attended such a show.

### Dr. Batra's supports Annamrita

Apart from spreading the goodness of homeopathy in India and across the globe, Dr. Mukesh Batra's passion for helping the needy and downtrodden in society is more than apparent in the personal involvement, commitment and great works carried out by Dr. Batra's Foundation. Dr Batra's Foundation established in 2001, has been making a difference to the lives of street children, physically and mentally challenged people, elderly and even extends its services to animals. Effective July 2016 Dr Batra's has partnered with Annamrita to support the cause of providing Mid Day Meals to underprivileged children by sponsoring a meal for a child for on each of their patient's Birthdays. We sincerely thank Dr Batra's for their kind support towards the project

### Annamrita Aurangabad celebrates 5<sup>th</sup> Anniversary

Annamrita Aurangabad started serving Midday Meals from 1<sup>st</sup> February, 2012. Five years later, thanks to the blessing of Lord Jagnathji Baldev Subhdramai, with inspiration of Srila Prahupada, H.H. Radhanath Swami and H.G. Radkrishna Prabhu, Annamrita Aurangabad celebrated its 5<sup>th</sup> anniversary in February 2016. A special menu was prepared for the children.

### GIC Re sponsors Midday Meals in rural Wada area

GIC has yet again partnered with Annamrita this year as well to sponsor Midday Meals for 3,333 children for 1 year in the rural Wada area. Their sponsorship will help 6 schools to provide to children with hot healthy wholesome meals. Last year as well GIC Re had sponsored Midday meals for Annamrita children.

### A Chocolatey Affair

The start of 2017 had Jeff King and Whitney Mayer along with Divyashree Bangera from Hersheys US visiting Annamrita Tardeo. Hershey work on a global nutrition program. They wanted to visit Annamrita schools to understand our project better and see first hand the work Annamrita is doing in the area of fighting malnutrition and classroom hunger. Needless to say they were very impressed with the scale of the work and we look forward to collaborating with them this year.

### M\*Modal supports meals in Palghar area

M\*Modal, the nation's largest transcription services provider, serving outsourced transcription needs of over 3,000 clients. This is the second year M Modal has provided sponsorship to Annamrita. Nearly 3,700 children were fed through this sponsorship in the rural Paghar area. We look forward to their support in the future as well.

#### THE ANNAMRITA KITCHEN

#### Dal

##### GRAINS & PULSES

YELLOW MOONG DAL

##### SPICES

DHANIYA POWDER

HALDI POWDER

HING POWDER

JEERA

RAI

##### OTHER ITEMS

GHEE

SALT

TOMATO PASTE

##### VEGETABLES

ADRAK

DHANIYA PATTI

GREEN MIRCHI

KADI PATTI

# 12 – Annamrita Food Process

How we prepare the meals

## Annamrita

**Food as Pure as Nectar.**

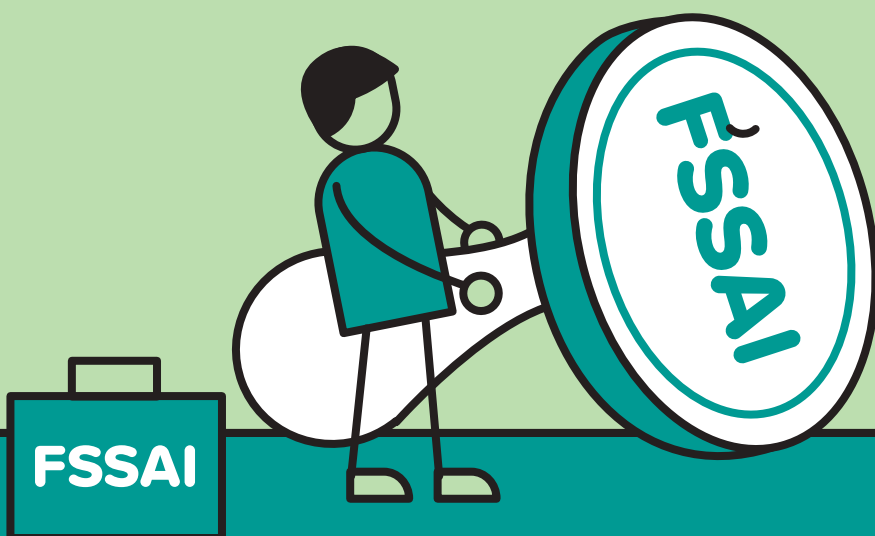
We make sure the food that reaches every child, every patient and every person is as good as a home-cooked meal, full of nutrition, taste, love and devotion. To ensure this, we follow an extensive ‘food process’ that involves procuring raw material, cleaning, cooking and last-mile delivery.

In our kitchens, we maintain the highest standards of hygiene, and have the best cooking and cleaning equipment and processes that ensure 100% quality control. We constantly push boundaries to make our food process safe.

We follow the guidelines set by the Food Safety and Standards Authority of India (FSSAI) to achieve the desired level of food safety. The FSSAI, an agency of the Ministry of Health & Family Welfare, Government of India, is responsible for protecting and promoting public health through the regulation and supervision of food safety.

**“We saw the entire operations of Annamrita. It was indeed impressive to see that meticulous planning and care taken to serve food to children at different schools across Mumbai.”**

Sweetie Thomas, HT Parekh Foundation



### THE ANNAMRITA KITCHEN

#### Sambar

**GRAINS & PULSES**

TOOR DAL

**SPICES**

HALDI POWDER

HING POWDER

IMLI

JEERA

RAI

SAMBAR MASALA

**OTHER ITEMS**

GHEE

SALT

SUGAR

TOMATO PASTE

**VEGETABLES**

ADRAK

BHOPLA

CARROT

DHANIYA PATTA

GREEN MIRCHI

KADI PATTA



## Rice Cleaning

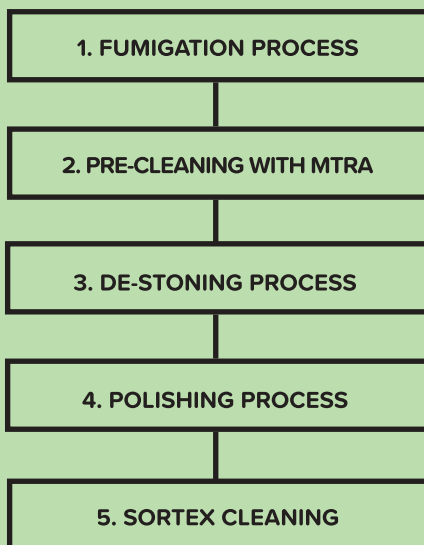
Rice is the most important ingredient in our meals and meal plans. We receive raw rice from the government (Food Corporation of India) at a subsidised rate, to which we add our funds and technology to make it edible by removing every foreign, unhealthy element.

We follow a five-step process to clean the rice and make it edible. We ensure every impurity, husk, dust, big and finer particles, stones and foreign particles are removed before it reaches our kitchen. We use hi-tech machines like fumigators, MTRA machines, gravity separator machines and colour sorting machines to get clean rice kernels.

**“All of us are responsible for our society but are unable to serve it directly. Annamrita gives us that opportunity and we are blessed to be a part of the Foundation.”**

Uttam Tawde, Accounts Team at Annamrita

### RICE CLEANING PROCESS



### THE ANNAMRITA KITCHEN

## Sambar Bhat Khichdi

#### GRAINS & PULSES

RICE

TOOR DAL

GROUND NUT

#### SPICES

HALDI POWDER

HING POWDER

IMLI

JEERA

RAI

SAMBAR MASALA

#### OTHER ITEMS

GHEE

SALT

SUGAR

TOMATO PASTE

#### VEGETABLES

ADRAK

BHOPLA

CARROT

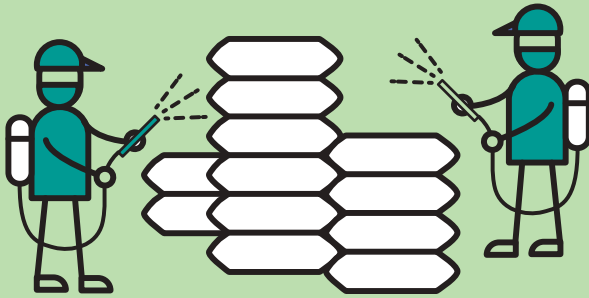
GREEN MIRCHI

KADI PATTI

POTATO

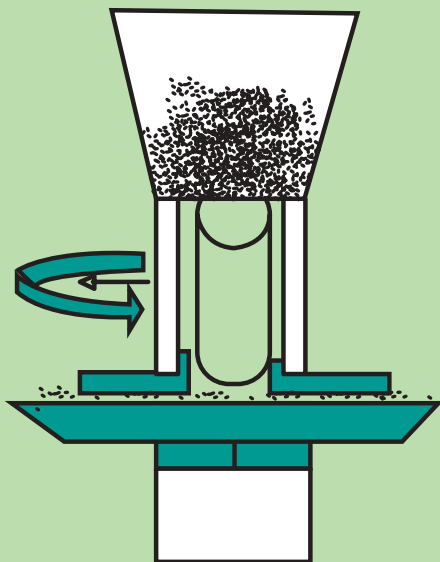
### 1. Fumigation process

Fumigation is a method of pest control. We pack the rice we receive from the government with polyvinyl chloride (PVC) sheets which are heat-sealed together and hooked to the floor. This ensures the fumigation doesn't contaminate the rice. We spray the bags with gas which eliminates eggs, larvae and worms.



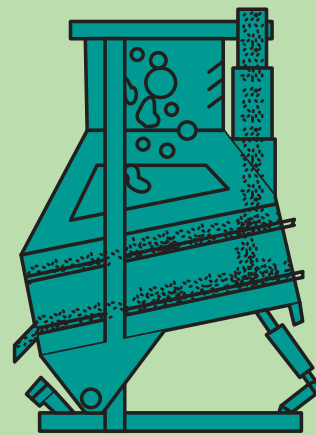
### 3. De-stoning process

Foreign materials such as stones are removed from the rice in this process. Stones or similar looking particles get introduced into the rice during harvest or handling and are heavier than the rice grains. These are removed by passing forceful air through the machine causing the rice grains to float on a cushion of air just above the screen. This allows the reciprocating screen to throw the denser stones to discharge chutes. After the rice is cleaned from the de-stoner, it is passed through the aspirator where the light dust from the rice is separated.



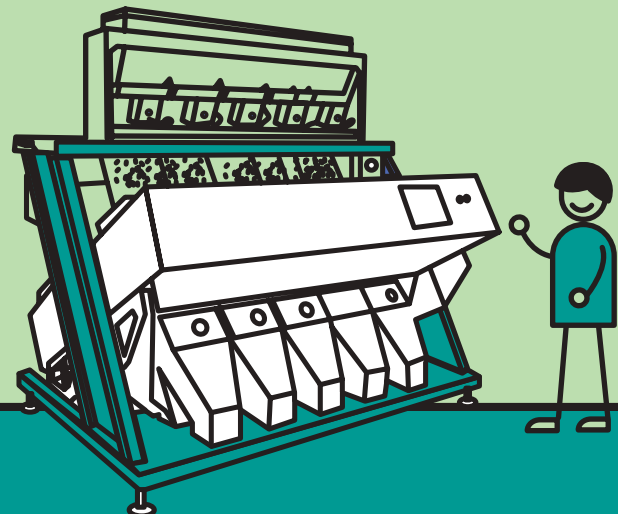
### 2. Pre-Cleaning with MTRA

Once the rice is fumigated, we use the Separator-Classifer MTRA machine to separate impurities. With its two sieve desks, the machine removes coarse impurities like large kernels, string, straw, wood, stones or clumps of soil, as well as fine impurities such as sand and breakage from the grain. Further, an optional aspiration channel or air recycling aspirator is employed through which low-density particles like dust, feathers, hull fragments or husks are separated.



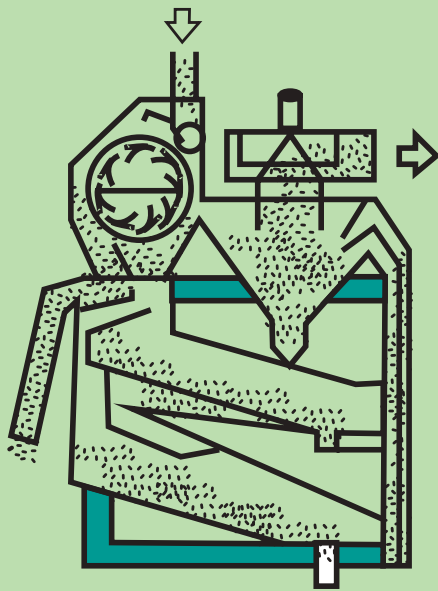
### 4. Polishing process

Once the rice is clean of all unwanted particles, we further ensure that eggs and larvae are not attached to its surface. Hence, the polishing process is deployed. The rice polishing takes place in a vacuum, with little amount of water, exhaust air and dust being conveyed to the dust collection filter, which further separates the dust from the air-stream. We have custom designed this process in a way that ensures that the rice kernel's delicate tip remains intact even if the rice is met with abrasion or friction.



### 5. Sortex cleaning

We employ Colour Sorting Machines to scan and check the colour of the rice grains. The end rice has to be white in colour. We pass the rice particles through 190 channels, with six cameras mounted inside the machine. The parameters (colour, length and width) of the rice are programmed into the machine, and each particle of rice is scanned through a powerful, high-resolution camera. Based on the result, the rice is either accepted, rejected or recleaned. Through this machine, we are able to ensure yellow or black kernels of rice do not get mixed with the final product.



At the last leg in the process, through the Sortex machine, we make sure yellow or black kernels of rice do not get mixed with the final product. The final rice has to be white in colour.



**“Annamrita is one of the largest Midday Meal programmes in India, with its roots in ISKCON. It is great to be a part of an activity which promotes good health, through good food for all.”**

Dilzad K., Marketing Manager, Annamrita

#### THE ANNAMRITA KITCHEN

##### GRAINS & PULSES

RICE

RED CHANA

YELLOW MOONG DAL

GROUND NUT

##### SPICES

CHOLE MASALA

DHANIYA POWDER

GARAM MASALA

HALDI POWDER

HING POWDER

JEERA

RAI

##### OTHER ITEMS

GHEE

SALT

TOMATO PASTE

##### VEGETABLES

ADRAK

BHOPLA

CARROT

GREEN MIRCHI

KADI PATTI

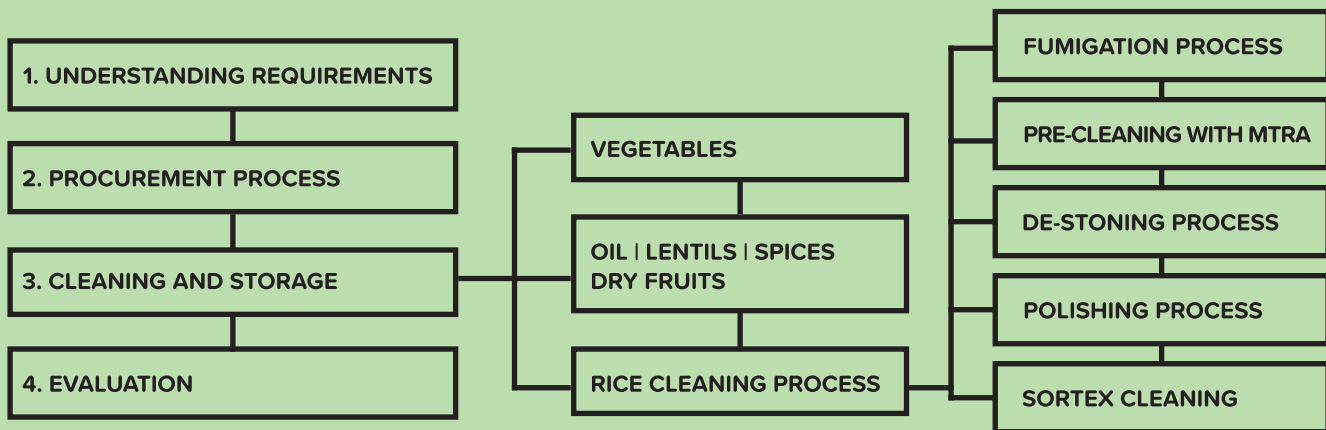
POTATO

CAPSICUM

## Procurement process

We are very particular about what goes into a meal. To ensure high food standards, we follow an intensive procurement process. We have an approved list of suppliers who are FSSAI licence holders and can provide material as per our specifications. We also follow the FIFO (first-in-first-out) method of stock rotation. Raw materials or ingredients are inspected and sorted as per specifications before processing. We use only sound, suitable raw materials and ingredients.

We procure fresh vegetables every two days and also organically grow them in safer environments.



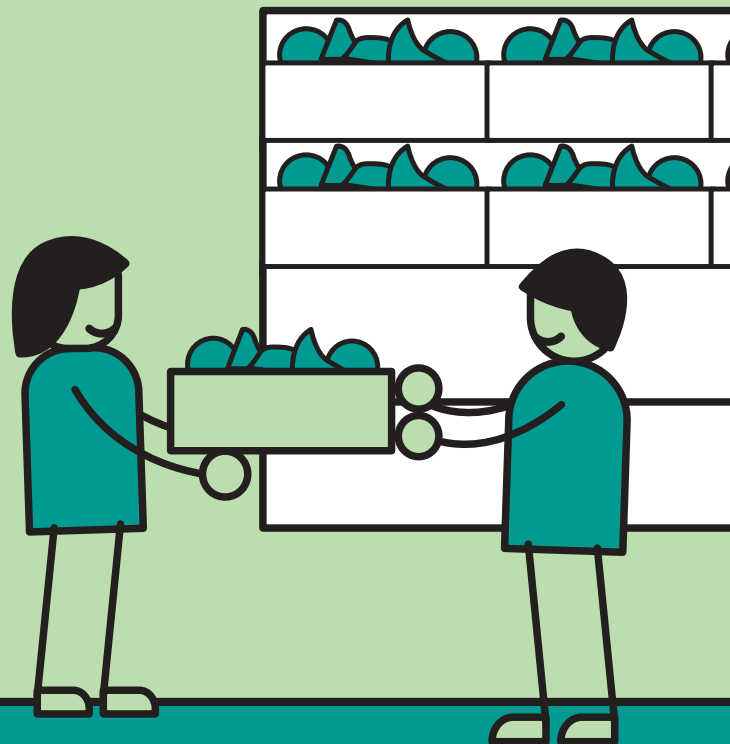
We ensure that at regular intervals, all kitchens prepare a requisition sheet about their material requirements. Since vegetables are procured on alternate days, the list of vegetables is made on a two-day basis. Once the requirement is known, we start the vendor selection process and in keeping with the high standards, we follow certain set procedures, which include:

### FSSAI License

We do not approve any vendor unless they have an FSSAI licence, because food adulteration is a common phenomenon. Vendors with ISO certification have an added advantage.

### Vendor Profile

Every vendor has to provide their details, including name, address of the registered office, contact details, and list of existing clients.



**Sample Testing**

We conduct sample testing of the raw material. We send it to NABL (National Accreditation Board for Testing and Calibration Laboratories) accredited laboratories for testing. As a standard norm, we sample test cooked food once every two months and edible raw material once a year.

**Packaging**

Packaging is equally important to us. High packing standards ensure hygiene and we like to be assured that the following standards are maintained for all products:

- Sortex Cleaning
- Packing in clean bags
- Labelling
- Cleanliness of delivery vehicle

We follow a stringent process of weighing, checking and physically examining raw material to ensure quality and right quantity. The raw material is stocked in the storage room which is regularly inspected and fumigated for pests, rats, etc.

**THE ANNAMRITA KITCHEN****Mug Dal Khichdi****GRAINS & PULSES**

RICE

YELLOW MOONG DAL

GROUND NUT

**SPICES**

DHANIYA POWDER

GARAM MASALA

HALDI POWDER

HING POWDER

JEERA

RAI

KASHMIRI MIRCHI POWDER

**OTHER ITEMS**

GHEE

SALT

TOMATO PASTE

**VEGETABLES**

ADRAK

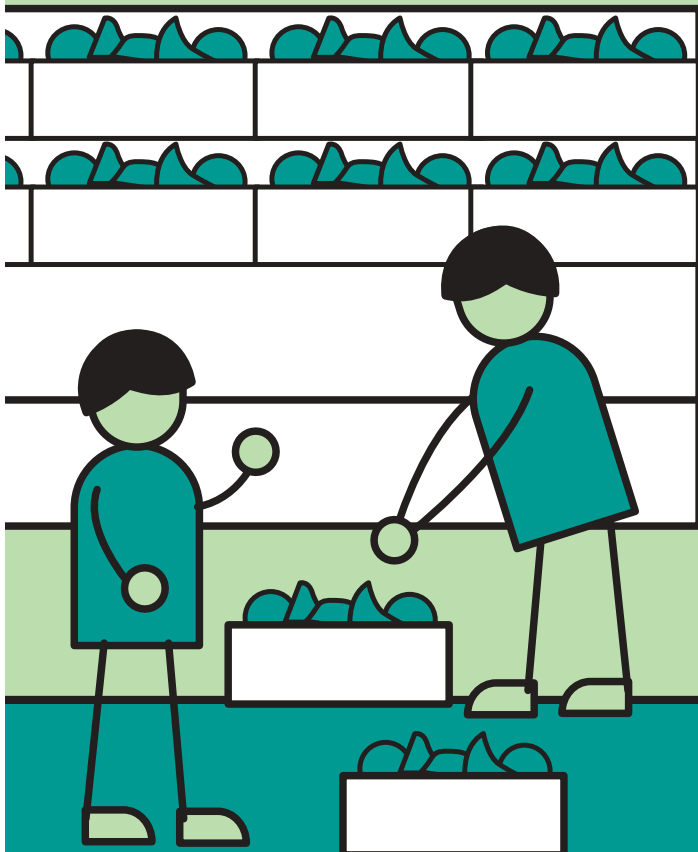
BHOPLA

CARROT

GREEN MIRCHI

KADI PATTI

POTATO



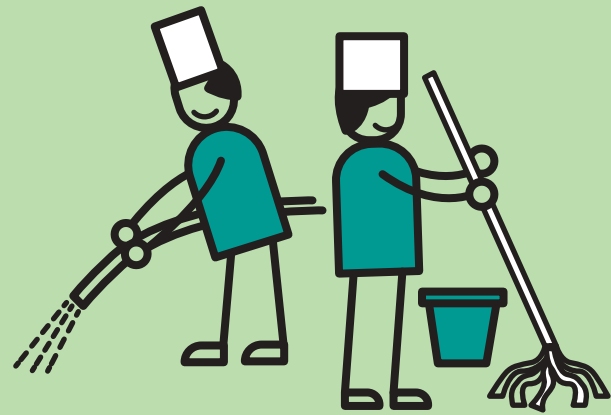
## Cooking

This is where the magic happens. From cleansing, cutting to cooking, Annamrita kitchens are well-equipped to do it all with the help of state-of-the-art boilers, cauldrons, and high-speed vegetable cutting and peeling machines. All the implements and food contact surfaces are made of Food Grade Stainless Steel, including the drainage system.

We follow an extensive cooking process, ensuring hygiene and cleanliness throughout, without compromising on the nutrition and taste at any level.

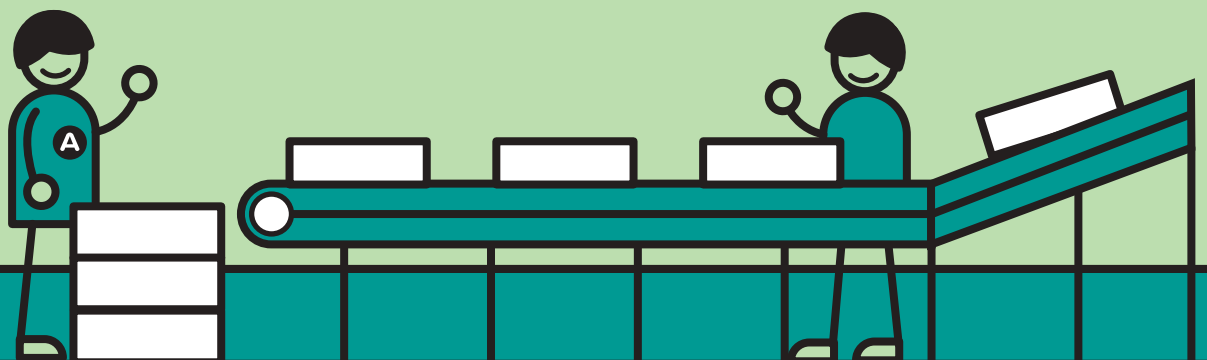
- ✓ The water we use is filtered and softened daily and checked for ISO:10500 every six months.
- ✓ Day-wise meal plans are designed to ensure variety.
- ✓ For every recipe, spices and oil required are weighed and taken to the cooking area.
- ✓ Food is cooked by the steaming method to ensure maximum retention of nutrients, taste and colour.
- ✓ Various parameters like temperature, pH value and sensory evaluations are recorded in each batch of cooking.
- ✓ Food is untouched by hand. It is filled up to the pre-measured level in every container on the conveyor belt.
- ✓ Containers are sealed with security seals and are colour coded to avoid tampering-schools have been instructed to not accept containers if the security seal is broken.
- ✓ Serving spoons after washing and sanitising are packed in plastic pouches.

We have trained cooks who, with the help of advanced technology, prepare food that satiates the body, mind and soul.



**“Our association with Annamrita is based on trust, commitment and our common belief to bring about social change. Annamrita’s reach, ability to plan and sustain projects is commendable.”**

Sangita Jindal, Chairperson, JSW Foundation



## Dispatch process

The last mile delivery process at Annamrita is designed to seamlessly deliver food across cities and towns.

### Sealed and coded

After the food is cooked, it is packed in containers up to a pre-measured level. Serving spoons, after washing and sanitising, are packed in plastic pouches with the containers. Each container is then sealed with security seals to avoid tampering and is colour coded to help easy identification during delivery. The security seal is of paramount importance and the schools have been instructed to not accept the containers if the seal is broken.

### Timing is key

Since schools run in two shifts and have different break times, we ensure our vehicles deliver meals on time for the children. We also keep samples of all the cooked food for the day and check their temperature after three hours of dispatch to coincide with the school lunch break timings.

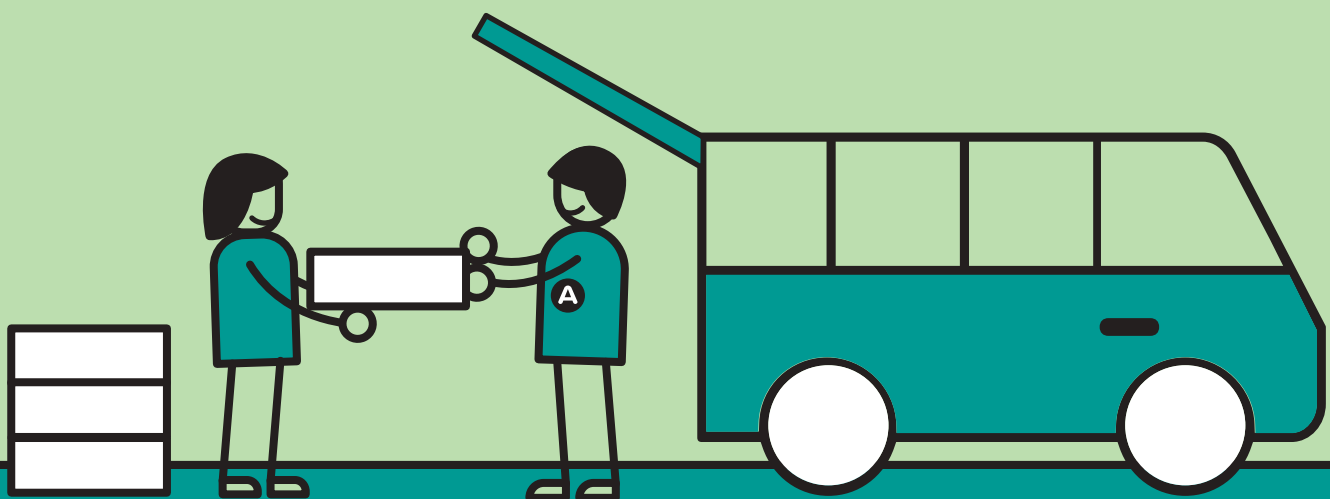
### Route Mapping

Specific route mapping is done taking into account traffic bottlenecks, and the consignments are acknowledged by signed challans along with the stamp of the schools. The vans are washed every day and fumigated on a weekly basis.

**“I have been working here for the last eight years and have enjoyed every day of my work. My job is to pack and seal the food containers, and on an average, I pack and wash an average of 400 dabbas each day.”**

Jeetram Berma, Housekeeper at Annamrita

318 Annamrita food delivery vans ply in seven states across India to provide midday meals to over 10 lakh students every day.



# 13 – How our work was acknowledged





# 14 – Finance and Accounts

## 1. Organisational Highlights – All India

- a) Identity
- b) Staff Details
- c) Year-wise Number of Meals
- d) Abridged Statement
- e) Midday Meal Programme Cost
- f) Year-wise Government Subsidy
- g) Year-wise Donations

## 2. Revenues – All India

- a) State-wise Government Grant
- b) State-wise Donations
- c) Analysis of Expenditure
- d) State-wise Capital Expenditure

## 3. Board of Trustees

- a) Trustee's Profile
- b) Trustee's Report

## 4. Financial Statements – Consolidated All India

- a) Auditor's Report
- b) Notes forming part of Accounts
- c) Balance Sheet
- d) Income & Expenditure
- e) Schedules
- f) Fund Flow Statement

## 5. Financial Statements of FCRA Accounts – Consolidated All India

- a) Auditor's Report
- b) Balance Sheet
- c) Income & Expenditure
- d) Schedules
- e) Receipts & Payments

# 1 – Organisational Highlights

## a) Identity

- The ISKCON Food Relief Foundation is registered as a charitable trust under Bombay Public Trust Act, 1950 (Reg. No. E-21854 dated 15.07.2004)
- The Trust deed is available on request.
- The ISKCON Food Relief Foundation is registered under Section 12A (a) of the Income Tax Act, 1961 on 02.09.2004.
- The ISKCON Food Relief Foundation is registered under Section 6 (1) (a) of the Foreign Contribution (Regulation) Act, 2010 (FCRA Reg. No. 084040005)

### **Name & Address of Main Bankers:**

#### **HDFC Bank Limited**

Tirupati Apartments, Shop No. 4,  
Bhulabhai Desai Road,  
Mumbai – 400 026.

#### **Kotak Mahindra Bank**

28 – Oscar Tower,  
Maratha Mandir Marg,  
Mumbai Central,  
Mumbai – 400 009.

### **Name & Address of Auditors**

#### **Girish S. Watwe**

Chartered Accountants  
202, 2<sup>nd</sup> Floor, Garden View,  
Dadabhai Road, Near Navrang Theatre,  
Andheri (West), Mumbai – 400 058.

### **Website**

[www.annamrita.org](http://www.annamrita.org)

## b) Staff Details

Staff Remuneration (Gross yearly + Benefits) in FY 2016-17

	Name	Designation	Remuneration (in ₹) [Gross yearly + Benefits]
OPERATIONAL HEAD OF THE ORGANISATION: (INCLUDING HONORARIUM):	MR. PRAKASH NANJUNDIAH	MANAGER OPERATIONS	10,03,874
HIGHEST PAID PERSON IN THE ORGANISATION (STAFF OR CONSULTANT)	MRS. JAYANTHI SUNDARARAMAN	CONSULTANT	81,94,298
LOWEST PAID PERSON IN THE ORGANISATION (STAFF OR CONSULTANT)	MR. RAM MARALE	SUPERVISOR	1,25,425

State-wise Details:

State	Total No. of Schools	Total No. of Beneficiaries	Total No. of Cooks	Total No. of Vehicles	Total No. of Employees (Payroll & Contract)	Total No. of Meals served per day
MAHARASHTRA	1,873	2,69,122	121	123	465	3,17,514
HARYANA	1,991	2,72,776	90	101	513	3,58,021
ANDHRA PRADESH	766	74,654	32	21	139	89,657
RAJASTHAN	820	42,136	22	15	57	58,983
DELHI	172	75,640	55	26	108	75,640
WEST BENGAL	153	9,600	3	8	39	9,600
JHARKHAND	418	50,490	45	41	120	91,850
<b>TOTAL</b>	<b>6,193</b>	<b>7,94,418</b>	<b>368</b>	<b>335</b>	<b>1,441</b>	<b>10,01,265</b>

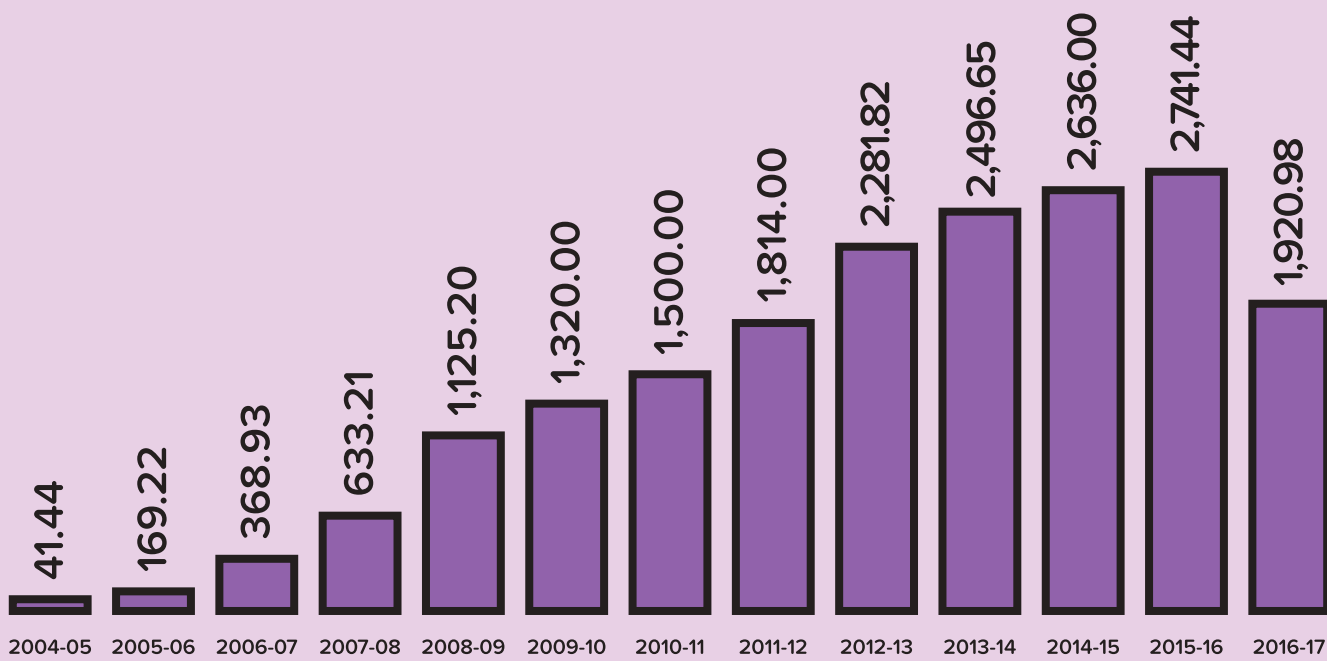
Salary slab for Employees and Consultants as of 31<sup>st</sup> March, 2017 (in ₹)

Slab of gross salary plus benefits paid to staff (per month)	Male staff	Female staff	Total staff
5,000 – 10,000	607	153	760
10,000 – 25,000	646	2	648
25,000 – 50,000	19	1	20
50,000 – 1,00,000	12	0	12
1,00,000 >	0	1	1
<b>TOTAL</b>	<b>1,284</b>	<b>157</b>	<b>1,441</b>

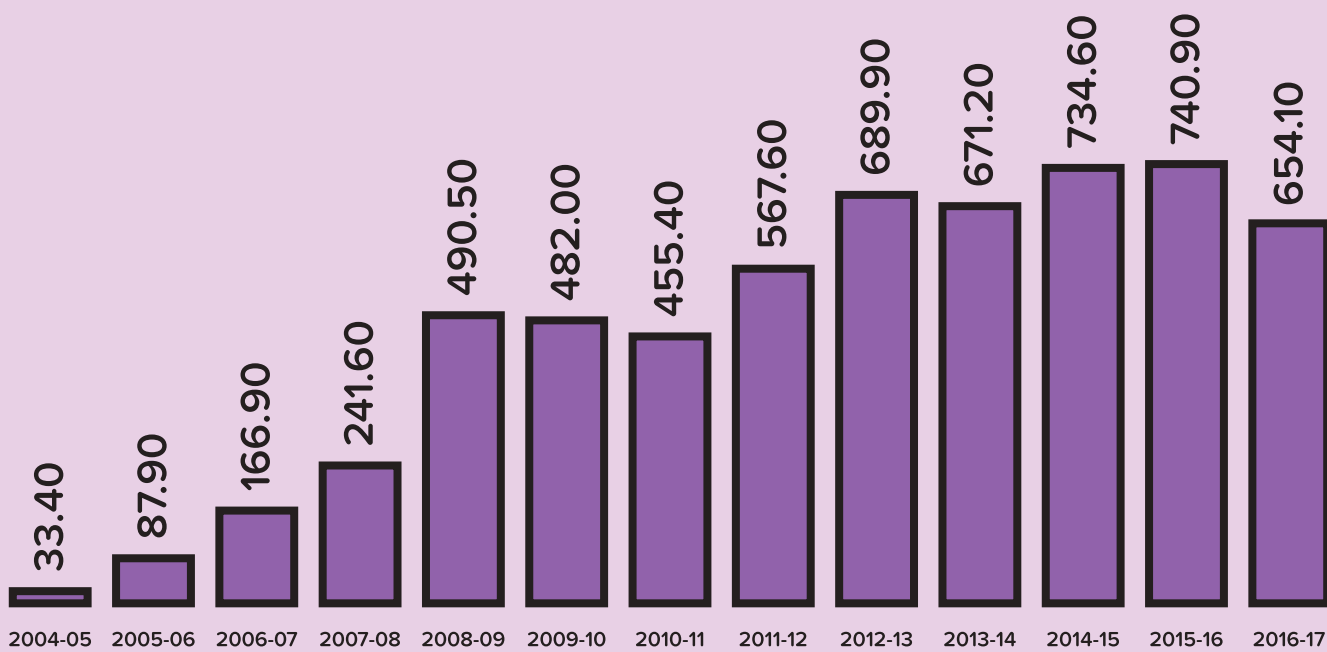
Total annual payments made to consultants (in ₹)	Number of Project Promoters (Consultants)
5,000 – 10,000	2
10,000 – 25,000	0
25,000 – 50,000	1
50,000 – 1,00,000	0
1,00,000 >	6

### c) Year-wise Number of Meals

Meals served across India (₹ in Lakhs)



Meals served across Maharashtra (₹ in Lakhs)



## d) Abridged Statement

Abridged Income & Expenditure Statement – All India (₹ in Lakhs)

Particulars	2016-17	2015-16
TOTAL INCOME	8,667.59	8,498.61
TOTAL EXPENDITURE	8,519.94	7,997.39
SURPLUS / (DEFICIT)	147.65	501.22

Source: Income & Expenditure Account

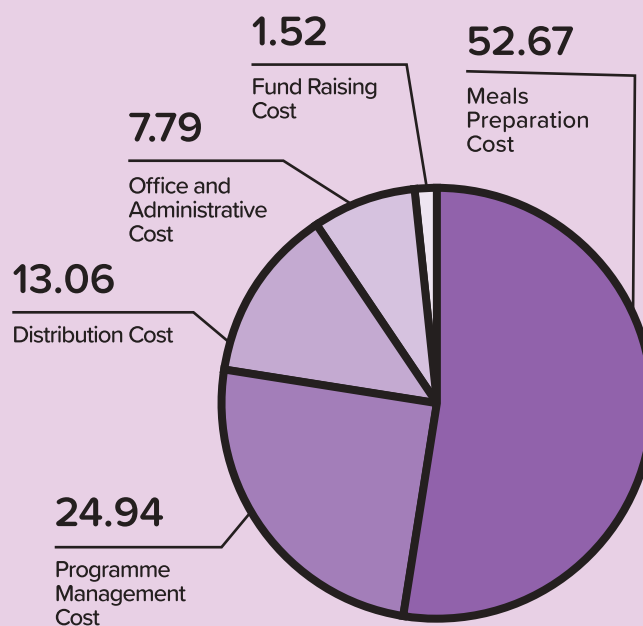
Abridged Balance Sheet – All India (₹ in Lakhs)

Particulars	2016-17	2015-16
NET FIXED ASSETS	2,471.20	2,361.28
INVESTMENTS	417.19	886.74
NET CURRENT ASSETS	3,187.39	2,798.47
<b>TOTAL ASSETS</b>	<b>6,075.78</b>	<b>6,046.49</b>
TRUST FUND & RESERVES	5,546.26	5,525.37
LOAN LIABILITY	529.52	521.12
<b>TOTAL FUND &amp; LIABILITY</b>	<b>6,075.78</b>	<b>6,046.49</b>

Source: Balance Sheet

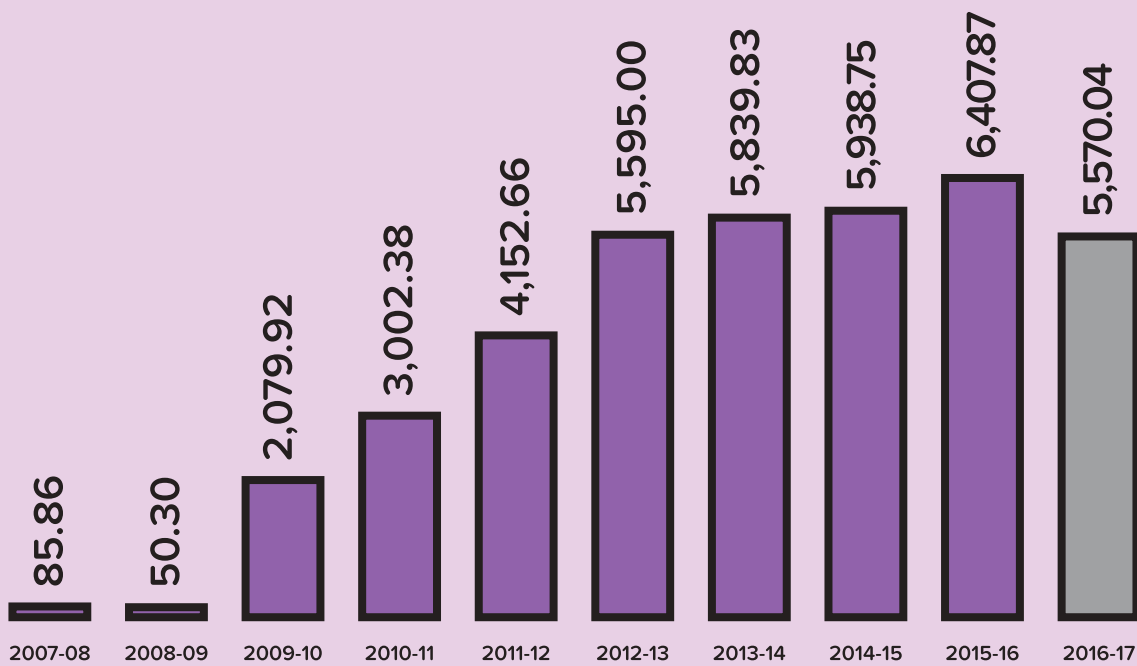
## e) Midday Meal Programme Cost

Particulars	Cost component	Total Cost (₹ in Lakhs)
MEAL PREPARATION COST	52.67	42.21
DISTRIBUTION COST	13.06	10.47
PROGRAMME MANAGEMENT COST	24.94	19.99
FUND RAISING COST	1.52	1.22
OFFICE AND ADMINISTRATIVE COST	7.79	6.24
	<b>99.99</b>	<b>80.14</b>



### f) Year-wise Government Subsidy (₹ in Lakhs)

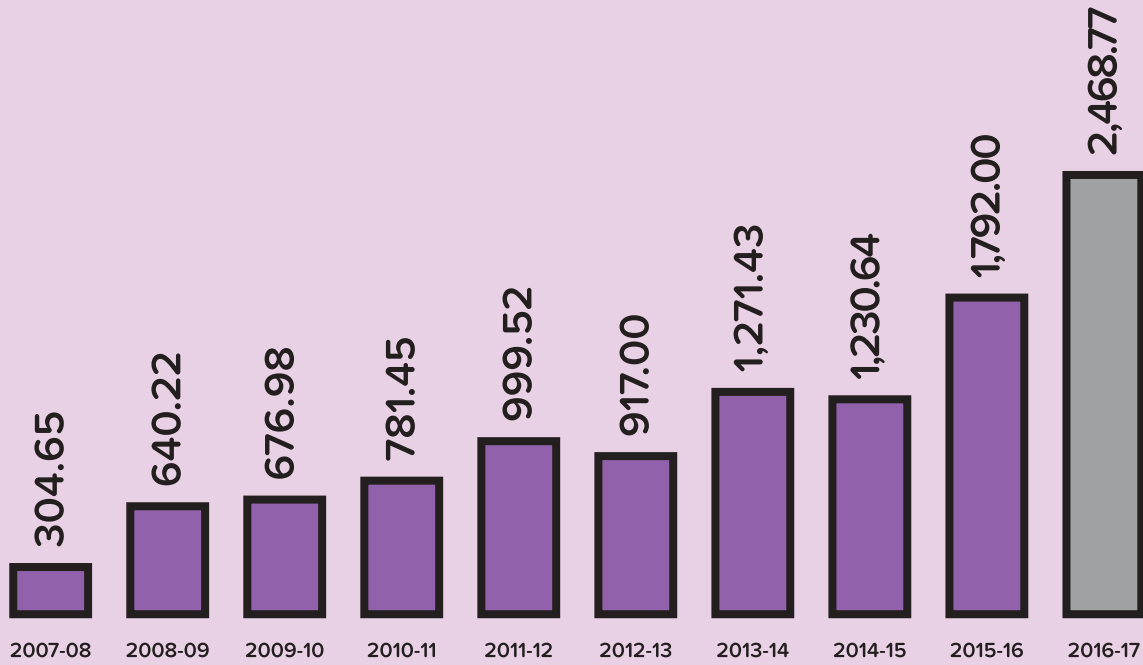
Year	2007 - 08	2008 - 09	2009 - 10	2010 - 11	2011 - 12	2012 - 13	2013 - 14	2014 - 15	2015 - 16	2016 - 17
GOVERNMENT GRANT & REIMBURSEMENT OF COOKING CHARGES	85.86	50.30	2,079.92	3,002.38	4,152.66	5,595.00	5,839.83	5,938.75	6,407.87	5,570.04



Source: Income & Expenditure Account

## g) Year-wise Donations (₹ in Lakhs)

Year	2007 - 08	2008 - 09	2009 - 10	2010 - 11	2011 - 12	2012 - 13	2013 - 14	2014 - 15	2015 - 16	2016 - 17
DONATION RECEIVED	304.65	640.22	676.98	781.45	999.52	917.00	1,271.43	1,230.64	1,792.00	2,468.77



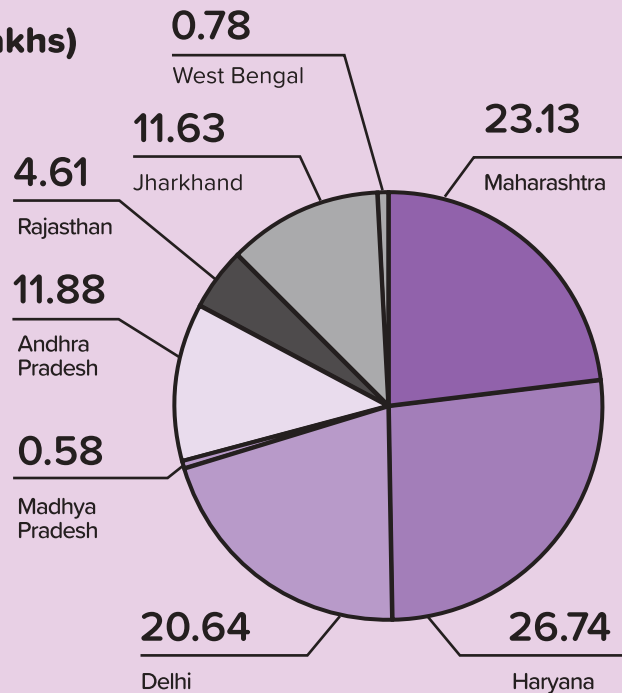
Source: Income & Expenditure Account

## 2 – Revenues – All India

### a) State-wise Government Grant (₹ in Lakhs)

States	%	2016-17	2015-16
MAHARASHTRA	23.13	1,288.18	1,805.86
HARYANA	26.74	1,489.36	2,234.17
DELHI	20.64	1,149.87	457.31
MADHYA PRADESH	0.58	32.58	127.76
ANDHRA PRADESH	11.88	661.88	929.85
RAJASTHAN	4.61	256.84	207.15
JHARKHAND	11.63	647.84	598.71
WEST BENGAL	0.78	43.49	47.05
<b>TOTAL</b>	<b>100.00</b>	<b>5,570.04</b>	<b>6,407.87</b>

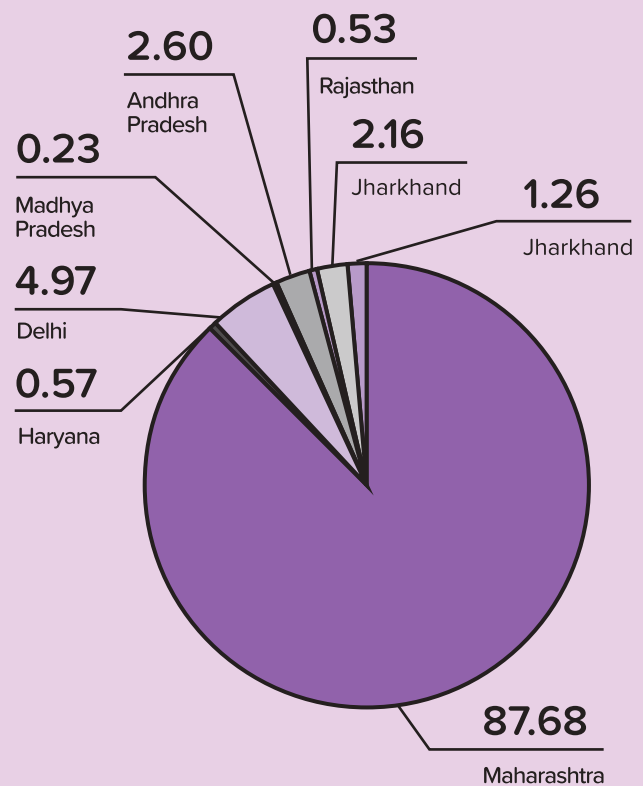
Source: Income & Expenditure Account



### b) State-wise Donations (₹ in Lakhs)

States	%	2016-17	2015-16
MAHARASHTRA	87.68	2,164.43	1,382.60
HARYANA	0.57	14.18	2.74
DELHI	4.97	122.74	101.59
MADHYA PRADESH	0.23	5.61	33.33
ANDHRA PRADESH	2.60	64.10	127.37
RAJASTHAN	0.53	13.05	45.93
JHARKHAND	2.16	53.21	34.95
WEST BENGAL	1.26	31.17	63.48
<b>TOTAL</b>	<b>100.00</b>	<b>2468.49</b>	<b>1792.00</b>

Source: Income & Expenditure Account

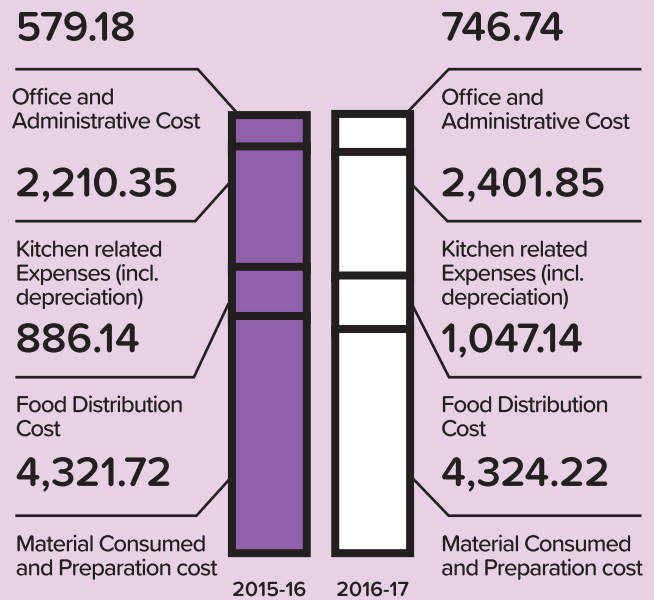




### c) Analysis of Expenditure (₹ in Lakhs)

Particulars	2016-17	2015-16
MATERIAL CONSUMED AND PREPARATION COST	4,324.22	4,321.72
FOOD DISTRIBUTION COST	1,047.14	886.14
KITCHEN RELATED EXPENSES (INCL. DEPRECIATION)	2,401.85	2,210.35
OFFICE AND ADMINISTRATIVE COST	746.74	579.18

Source: Income & Expenditure Account



### d) State-wise Capital Expenditure

States	Amount
MAHARASHTRA	556.98
HARYANA	25.32
DELHI	4.44
MADHYA PRADESH	0.21
ANDHRA PRADESH	26.17
RAJASTHAN	6.06
JHARKHAND	44.08
MADHYA PRADESH	14.58
<b>TOTAL</b>	<b>677.85</b>

Source: Income & Expenditure Account

## Highlights of Major Additions to Fixed Assets

### ANDHRA PRADESH

#### Kadappa

Additions to

- a) Computer & Printer ₹ 0.18 lakh

#### Nellore

Additions to

- a) Kitchen Equipments ₹ 1.83 lakhs  
b) Kitchen building ₹ 0.18 lakh  
c) Camera & Intercom ₹ 0.19 lakh  
d) Computer & Printer ₹ 0.48 lakh

#### Rajamundry

Additions to

- a) Water Tank ₹ 0.35 lakh

#### Tirupati

Additions to

- a) Boilers ₹ 0.20 lakh  
b) Mobile Phone ₹ 0.13 lakh  
c) Electrical Material ₹ 0.04 lakh  
d) Vessels ₹ 5.30 lakhs  
e) Capital WIP ₹ 8.22 lakhs  
f) CC TV Cameras ₹ 0.11 lakh  
g) Cold Storage Room ₹ 6.75 lakhs  
h) Grinder ₹ 1.29 lakhs  
i) Pulp Extraction Machine ₹ 0.44 lakh  
j) Vegetable Cutting Machine ₹ 0.42 lakh

### DELHI

Additions to

- a) Kitchen Equipments ₹ 0.28 lakh  
b) Office Equipments ₹ 0.30 lakh

### HARYANA

#### Faridabad

Additions to

- a) Kitchen Equipment – ₹ 4.60 lakhs  
b) Computers – ₹ 66 lakhs  
c) Electrical Equipment ₹ 0.66 lakh  
d) Vehicle ₹ 9.80 lakhs  
e) Furniture & Fixtures ₹ 0.06 lakh

#### Gurgaon

Additions to

- a) Kitchen Appliances ₹ 3.23 lakhs  
b) Lift ₹ 0.37 lakh  
c) Computer Accessories ₹ 0.25 lakh

#### Kurukshetra

Additions to

- a) Electrical Equipment ₹ 0.13 lakh  
b) Sewing Machine ₹ 0.06 lakh  
c) Utensils ₹ 3.70 lakhs

#### Palwal

Additions to

- a) Computer & Printer ₹ 0.15 lakh  
b) Kitchen Equipment ₹ 4.14 lakhs  
c) Vehicles ₹ 1.14 lakhs  
d) Telephone Instrument ₹ 0.05 lakh  
e) Furniture ₹ 0.13 lakh

### JHARKHAND

#### Jamshedpur

Additions to

- a) Kitchen Equipment ₹ 30.63 lakhs  
b) Computer/Laptop ₹ 1.08 lakhs  
c) Vehicles ₹ 12.35 lakhs

### MADHYA PRADESH

#### Ujjain

Additions to

- a) Machinery ₹ 0.21 lakhs

### MAHARASHTRA

#### Aurangabad

Additions to

- a) Computers ₹ 0.10 lakh  
b) Furniture & Fixtures ₹ 0.64 lakh  
c) Kitchen Infrastructure ₹ 0.17 lakh  
d) Kitchen Utensils ₹ 0.65 lakh  
e) Mobile ₹ 0.11 lakh  
f) SS Daba Sets ₹ 0.90 lakh  
g) Vehicle ₹ 23.54 lakhs  
h) Water Filtration Plant ₹ 0.07 lakh  
i) Weighing Machine ₹ 0.06 lakh

#### Cooper Hospital

Additions to

- a) Air Conditioner ₹ 0.05 lakh  
b) Attendance ₹ 0.19 lakh  
c) CCTV ₹ 2.15 lakhs  
d) Computer ₹ 0.60 lakh  
e) Furniture & Fixture ₹ 2.55 lakhs  
f) Cooper Kitchen ₹ 19.05 lakhs  
g) Kitchen Construction ₹ 7.54 lakhs  
h) Kitchen Equipment ₹ 31.08 lakhs  
i) Kitchen Exhaust ₹ 1.94 lakhs

- j) Refrigerator ₹ 1.18 lakhs

- k) Telephone/Mobile ₹ 0.30 lakh

#### Nigdi

Additions to

- a) Boiler ₹ 2.38 lakhs  
b) Ceiling Fan ₹ 0.03 lakh  
c) Kitchen Utensils ₹ 0.16 lakh  
d) Laptop ₹ 0.19 lakh  
e) Vegetable Cutting Machine ₹ 0.49 lakh  
f) laptop ₹ 0.28 lakh

#### Tardeo

Additions to

- a) Computers ₹ 0.34 lakh  
b) Computer Software ₹ 0.04 lakh  
c) Kitchen Equipment ₹ 42.22 lakhs  
d) Vehicles ₹ 107.28 lakhs  
e) CCTV ₹ 0.50 lakh  
f) Refrigerator ₹ 0.24 lakh  
g) Kanchad WIP ₹ 106.31 lakhs  
h) Telephone ₹ 0.07 lakh  
i) Kitchen Construction Civil ₹ 81.27 lakhs  
j) Office Equipment ₹ 0.09 lakh  
k) Pressure Reducing System ₹ 0.50 lakh

#### Wada

Additions to

- a) Attendance ₹ 0.13 lakh  
b) Kitchen Equipments ₹ 5.80 lakhs

### RAJASTHAN

#### Jaipur

Additions to

- f) Kitchen Appliances ₹ 0.32 lakh  
b) Building Construction ₹ 3.88 lakhs  
e) Plant & Machinery ₹ 1.78 lakhs  
d) Computer Software ₹ 0.06 lakh

### WEST BENGAL

#### Kolkata

Additions to

- a) Computer & accessories ₹ 0.23 lakh  
b) Vehicles ₹ 11.76 lakhs  
c) Furniture & Fittings ₹ 0.08 lakh  
d) Kitchen Equipments ₹ 2.50 lakhs

## 3 – Board of Trustees

### a) Trustee's Profile

Name	Work Experience/Background
MR. KUSHAL N. DESAI	Mr. Kushal Desai is an Administrative Advisor and Trustee of ISKCON Food Relief Foundation. He has a Bachelor of Science degree in Electrical Engineering from the Moore School of Electrical Engineering and a Business degree from the Wharton School, both of which are part of University of Pennsylvania. Mr. Desai was the Managing Director of GE Lighting in India. He has been associated with ELCOMA and IEEMA in various capacities in the past. He is the President of Dharmsinh Desai University, Nadiad and a Trustee on the Board of DDMM Heart Hospital, Nadiad (Gujarat) and The Lady Northcote Hindu Orphanage. Mr. Desai is currently the Chairman & Managing Director of Apar Industries Ltd.
MR. YOGESH CHADHA	Mr. Yogesh Chadha is the Administrative Advisor and Trustee of ISKCON Food Relief Foundation. He is a qualified Chartered Accountant and has a fantastic work experience record. He has previously served as the Chief Operating Officer with JP Morgan Chase, Chief Financial Officer at Development Credit Bank and Country Head of British Investment Bank. He has also recently started a private equity fund. He is currently responsible for the Trust's financial affairs.
MR. SANJIV MAHESHWARI	Mr. Sanjiv Maheshwari is a Trustee of ISKCON Food Relief Foundation. A Cost Accountant, Sanjiv received a Masters in Management Studies degree from Mumbai University. Sanjiv was a Senior VP – Finance and Operations at Ness Global Corporation, prior to which he was an integral part of the core teams at Sandoz, Novartis and Syngenta. He is currently serving as General Partner and CFO, Basil Partners, PE Fund where he is responsible for due diligence of potential companies, legal and regulatory matters and is a key member of the Investment Committee.
MR. KUNJAN GANDHI	Mr. Kunjan Gandhi is a Trustee of ISKCON Food Relief Foundation. He has completed his CA and ICWA and also done his Independent Director Studies (IDS) from S.P. Jain Institute of Management and Business Consultancy Studies Programme by JBIMS. He is a Member of the Board of Directors of India Card Clothing Ltd. and Member of Taxation Committee of Bombay Chartered Accountants Society. He is a COO with World Tax Service India Pvt. Ltd., Mumbai, India which is a subsidiary of WTS AG, a German based Tax and Finance Advisory Company and a Senior Partner with Thacker Butala Desai, Firm of Chartered Accountants.

### a) Trustee's Profile (Contd.)

Name	Work Experience/Background
MR. SANJAY TIKKU	Mr. Sanjay Tikku is the Programme Director of Midday Meals – Delhi, Rajasthan and Jarkhand, Convenor of the Central Committee and Trustee of ISKCON Food Relief Foundation. He has done his B.Sc from Delhi University and his PG diploma in Interior Design from J&N. His entrepreneurial sprit led him to start a courier company and later an Interior Design orgnsisation with specialisation in exhibition design and event management, along with designing of commercial spaces, offices and Malls. He also started Imports of UPVC roofing sheets from Malasiya and China for marketing in India.
MR. RAJENDRA KUMAR PUJARI	Mr. Rajendra Kumar Pujari is the Programme Director of Midday Meals – Maharashtra and Trustee of ISKCON Food Relief Foundation. He has completed his B.E. (Mechanical). He has worked with Tube investments of India Ltd/Pennar Industries as Manager Marketing. Mr. Pujari is currently serving as the General Manager with Back to Godhead, India, a magazine of ISKCON and also serves as the Alternative Director of Back to Godhead Global magazine,e USA.
H.G. SATYA GOPINATH DAS	H.G. Satya Gopinath Das is a member of the Central Committee and a Trustee of ISKCON Food Relief Foundation. He has completed his Diploma in Mechanical Engineering. He has been a Chairman of SIDC and Vice Charman of IIA. Shri P. Satya Gopinath Das has served as the Director of ISKCON Andhra Pradesh and President of ISKCON Rajamundhry, Ananthapur and Guntur. He has been appointed as GDO. He conducts preaching on Bhakti TV and in Middle East countries such as Dubai, Abu Dhabi, Sharjah, Bahrain etc.
H.G. RISHI KUMARA DAS	H.G. Rishi Kumara Das is a Trustee of ISKCON Food Relief Foundation. He has completed his BA from the Kerala University and MBA in Marketing & HR from Cochin University. He has worked for nearly 13 years with the Indian Express Group, Hindustan Times Group and Express KCS an Indian MNC in various capacities in Strategic Planning, HR, Brand Management & Training in Senior Management positions. Shri Rishi Kumara Das joined ISKCON in 2010 and served initially as the Director English Media, currently he is the Secretary for ISKCON Delhi Temple President & Temple Management Council & Vice-President for ISKCON Punjabi Bagh. Also the Legal Coordinator for ISKCON Vrindavan and ISKCON Delhi and co-ordinator for the ISKCON Seva Trust. He is actively involved in rolling out Reengineering Initiatives in Accounts and Cost Control for ISKCON Delhi and assisting the Bureau in initiatives as desired in Delhi-NCR and North India.
MR. SANDEEP GUPTA	Mr. Sandeep Gupta is the Programme Director of Midday Meals – Madhya Pradesh and Trustee of ISKCON Food Relief Foundation. He has completed his CA from Institute of Chartered Accountants of India, New Delhi and LLB from Ujjain University. He is a Partner with Sanjay B Gupta & Co. Chartered Accountants. He has vast knowledge in Financial Consultancy, Accounting, Auditing & Allied Activities.

Name	Work Experience/Background
H.H. BHAKTI CHARU SWAMI	He is the Chairman of the Trust. He is a graduate in Chemistry. He has served in various managerial capacities and has undertaken many social activities for the last 30 years.
H.H. GOPAL KRISHNA GOSWAMI	He is the Co-Chairman of the Trust. He has completed his Masters in Business Administration from McGill University at Montreal and worked as the Senior Marketing Executive for Pepsico Inc. in Canada for several years. He is a member of the Governing Body Commission of ISKCON Worldwide. He is also the Trustee of Bhaktivedanta Book Trust. He is at present heading the ISKCON Delhi.
H.G. DEVAKINANDAN DAS	He is responsible for the Fund Raising activities of the Trust. He has served as the Chairman of the Fund Raising Committee for ISKCON, Juhu since 1998. He is responsible for the activities of ISKCON in Mumbai, Lucknow and Allahabad.
H.G. REVATI RAMAN DAS	He has a Diploma in Mechanical Engineering from Bangalore. Worked as a superintendent in a multi-national company 'BOSCH'. He served in the Bangalore temple till 1996 and then continued serving as the Temple President in ISKCON Tirupati. Recently he has been appointed as the ISKCON Governing Body Commission member.

### Amount gross remuneration paid to members of Statutory Governing Body by the organisation

Name	Gender (Male/ Female)	Country of Birth	Position on Board	Gross Remuneration per annum (₹)
H.H. BHAKTI CHARU SWAMI	MALE	INDIA	CHAIRMAN	0
H.H. GOPAL KRISHNA GOSWAMI	MALE	INDIA	TRUSTEE	0
H.G. DEVAKINANDAN DAS	MALE	INDIA	TRUSTEE	0
H.G. REVATI RAMAN DAS	MALE	INDIA	TRUSTEE	0

### Amount reimbursed to all Board members in the Financial year 2016-17 (in ₹)

1	INTERNATIONAL TRAVEL	0
2	DOMESTIC TRAVEL	0
3	LOCAL CONVEYANCE	0
4	ENTERTAINMENT EXPENSES	0
5	OTHERS	0

Total Cost of National Travel by all personnel (including volunteers) and Board members: ₹ **6,68,121/-**

Total Cost of International Travel by all personnel (including volunteers) and Board members: **Nil**

## b) Trustee's Report

The Foundation's Trustees are pleased to present the Annual Report for the 13<sup>th</sup> year of the Foundation along with the audited accounts for the financial year ended 31<sup>st</sup> March, 2017.

### Financial Performance (₹ in Lakhs)

Extract of Income & Expenditure Account	For the Year ended 31 <sup>st</sup> March, 2017		For the Year ended 31 <sup>st</sup> March, 2016		Amount Increase/ (decrease)	% Increase/ (decrease)
	Amount	% to Revenue	Amount	% to Revenue		
<b>INCOME FROM:</b>						
DONATIONS	2,468.77	28.48	1,792.00	21.09	676.77	37.77
REIMBURSEMENT OF COOKING CHARGES	5,570.05	64.26	6,407.87	75.40	(837.82)	(13.07)
GOVERNMENT GRANTS AND OTHERS	439.06	5.07	298.74	3.52	140.32	46.97
RECEIPT FROM FOOD TO HOSPITAL PATIENTS	189.72	2.19	0.00	-	189.72	2.23
<b>TOTAL REVENUE</b>	<b>8,667.59</b>	<b>100.00</b>	<b>8,498.61</b>	<b>100.00</b>	<b>168.99</b>	<b>73.89</b>
<b>EXPENDITURE TOWARDS:</b>						
MATERIAL CONSUMED AND PREPARATION COST	4,324.22	49.89	4,321.72	50.85	2.50	0.06
FOOD DISTRIBUTION COST	1,047.14	12.08	886.14	10.43	160.99	18.17
KITCHEN RELATED EXPENSES	1,999.13	23.06	1,837.60	21.62	161.53	8.79
OFFICE AND ADMINISTRATIVE COST	746.74	8.62	579.18	6.81	167.56	28.93
<b>TOTAL OPERATING EXPENDITURE</b>	<b>8,117.22</b>	<b>93.65</b>	<b>7,624.64</b>	<b>89.72</b>	<b>492.58</b>	<b>6.46</b>
<b>OPERATING RESULT</b>	<b>550.37</b>		<b>873.97</b>		<b>(323.59)</b>	<b>(37.03)</b>
DEPRECIATION	402.72	4.65	372.75	4.39	29.97	8.04
<b>NET OPERATING RESULT</b>	<b>147.65</b>	<b>1.70</b>	<b>501.22</b>	<b>5.90</b>	<b>(353.57)</b>	<b>(70.54)</b>

## 4 – Financial Statements – Consolidated All India

### a) Auditor's Report

#### AUDITOR'S REPORT

We have audited attached Balance Sheet of **ISKCON FOOD RELIEF FOUNDATION** as at 31<sup>st</sup> March, 2017 and also the Income & Expenditure Account of the Trust for the year ended on that date. These financial statements are the responsibility of the Trust management. Our responsibility is to express an opinion on these financial statements based on our audit.

We conducted our audit in accordance with auditing standards generally accepted in India. Those standards require that we plan and perform the audit to obtain reasonable assurance about whether the financial statements are free of material misstatement. An audit includes examining on a test basis, evidence supporting the amounts and disclosures in the financial statements. An audit also includes assessing the accounting principles used and significant estimates made by management, as well as, evaluating the overall financial statement presentation. We believe that our audit provides a reasonable basis for our opinion and report that;

1. We have obtained the information and explanations which to the best of our knowledge and belief were necessary for the purpose of our audit.
2. In our opinion, proper books of account as required by law have been kept by Trust, so far as appears from our examination of the books.
3. The Balance Sheet and Income & Expenditure Account dealt with by this report are in agreement with books of account.

In the case of the **Balance Sheet**, of the state of affairs of the Trust as at **31<sup>st</sup> March, 2017**;

AND

In the case of Income & Expenditure Account of the **Surplus** of the Trust for the year ended on that date.

Place: Mumbai

Date: 31<sup>st</sup> October, 2017

**For Girish S. Watwe & Associates**  
Chartered Accountant

**Girish S. Watwe (Prop)**  
Membership No. 41757



## b) Notes forming part of the Accounts

1. **Basis:** The receipt/cash system of accounts is being followed by the trust. Therefore incomes or expenses are recorded only when actually received or when payment is made.
2. The Trust has its head office at Mumbai & various centres all over India. Therefore, accounts of all these centres have been consolidated as of 31<sup>st</sup> March, 2017 for the purpose of this annual report.
3. **Reimbursement of Cooking Charges:** stands for the money received from the various authorities on behalf of the government.
4. **Food Preparation & Distribution Expenses:** stands for Expenses related with the direct activity of the trust.
5. **Kitchen Related Expenses:** stands for expenses which are supporting to direct activity of the trust.
6. **Office & Administrative Expenses:** stands for the expenses which indirectly related with the activity of the trust. The expenses which are incurred on the management & administrative activity.
7. **Closing stock:** of raw materials has been verified by the management as of 31<sup>st</sup> March, 2017 & has been valued at cost.
8. **Fixed Assets:** have been valued at cost less depreciation. Depreciation has been charged on written down value basis.
9. **Investments:** Excess cash surplus has been invested for the purpose of building up an amount for the purpose of establishing new projects. These are stated at cost.
10. **Current Liabilities:** stands for the payment of statutory compliances & other expenses for the month of March, 2017.
11. **Grants of Raw materials:** having no cost to the trust have not been passed through the accounts. They may form a part of the closing stock on 31<sup>st</sup> March, 2017.
12. **Expenses:** have been re-grouped & re-classified wherever necessary.

### c) Balance Sheet as at 31<sup>st</sup> March, 2017

31 <sup>st</sup> March, 2016	Liabilities	Sch.	31 <sup>st</sup> March, 2017	31 <sup>st</sup> March, 2017	31 <sup>st</sup> March, 2016	Assets	Sch.	31 <sup>st</sup> March, 2017
	<b>TRUST CORPUS</b>				23,61,28,098	<b>FIXED ASSETS (WDV)</b>	<b>O</b>	24,71,20,099
55,25,37,326	BALANCE B/D	<b>A</b>	55,25,37,326					
	ADDITIONS		20,88,830	55,46,26,156	8,86,74,267	<b>INVESTMENTS</b>	<b>M</b>	4,17,19,116
5,21,11,988	<b>LOANS LIABILITY</b>	<b>I</b>		5,29,49,806	18,89,60,307	<b>CURRENT ASSETS, LOANS &amp; ADVANCES</b>	<b>N</b>	22,01,49,465
	<b>CURRENT LIABILITIES</b>							
1,45,56,476	OTHER CURRENT LIABILITIES	<b>J</b>		48,85,990	-	<b>INTER BRANCH TRANSFER</b>	<b>K</b>	-
(9,52,10,285)	<b>INCOME &amp; EXPEN. A/C</b>			(8,67,72,950)	1,02,32,831	<b>STOCK IN HAND</b>	<b>L</b>	1,67,00,323
<b>52,39,95,504</b>	<b>TOTAL</b>			<b>52,56,89,002</b>	<b>52,39,95,504</b>	<b>TOTAL</b>		<b>52,56,89,002</b>

As per our report of even date

For and on behalf of  
ISKCON Food Relief Foundation

For Girish S. Watwe & Associates  
Chartered Accountant

**Girish S. Watwe**  
Proprietor  
Membership No. 041757  
Place : Mumbai  
Date : 31<sup>st</sup> October, 2017

**Dr. Ravindra Khatanhar**  
Administrative Advisor

### d) Income & Expenditure Account for the Year Ended 31<sup>st</sup> March, 2017

	SCH	31 <sup>st</sup> March, 2017	31 <sup>st</sup> March, 2016
<b>INCOME:</b>			
DONATIONS RECEIVED	B	24,68,76,827	17,91,99,570
REIMBURSEMENT OF COOKING CHARGES	C	55,70,04,542	64,07,86,794
GOVERNMENT ASSISTANCE & OTHER INCOME	D -1	2,72,05,415	1,96,41,373
RECEIPTS FROM FOOD TO HOSPITAL PATIENTS	D -2	1,89,72,281	-
CLOSING STOCK – RAW MATERIALS	L	1,67,00,323	1,02,32,831
<b>TOTAL</b>		<b>86,67,59,388</b>	<b>84,98,60,568</b>
<b>EXPENDITURE:</b>			
OPENING STOCK – RAW MATERIALS	L	1,02,32,831	87,21,330
FOOD PURCHASING & PREPARATION COST	E	42,21,88,961	42,34,50,490
FOOD DISTRIBUTION COST	F	10,47,13,719	8,86,14,435
KITCHEN RELATED EXPENSES	G	19,99,12,581	18,37,60,081
OFFICE & ADMIN COST	H	7,46,73,859	5,79,17,591
NON-CASH EXPENSE (DEPRECIATION)	O	4,02,72,104	3,72,74,683
<b>TOTAL</b>		<b>85,19,94,055</b>	<b>79,97,38,610</b>
<b>SURPLUS/DEFICIT</b>		<b>1,47,65,332</b>	<b>5,01,21,958</b>

As per our report of even date

For and on behalf of  
ISKCON Food Relief Foundation

For Girish S. Watwe & Associates  
Chartered Accountant

**Girish S. Watwe**  
Proprietor  
Membership No. 041757  
Place : Mumbai  
Date : 31<sup>st</sup> October, 2017

## e) Schedules

### Schedule A: Corpus Donations

Particular	31 <sup>st</sup> March, 2017	31 <sup>st</sup> March, 2016
	₹	₹
<b>IN CASH/BANK:</b>		
OPENING BALANCE	55,18,09,621	52,42,04,455
ADD: RECEIVED DURING THE YEAR	20,88,830	2,76,05,166
<b>IN KIND:</b>		
OPENING BALANCE	7,27,700	7,27,700
ADD: RECEIVED DURING THE YEAR	5	5
LESS : DEDUCTIONS DURING THE YEAR	-	-
<b>TOTAL</b>	<b>55,46,26,156</b>	<b>55,25,37,326</b>

### Schedule B: Voluntary Donations

Particular	31 <sup>st</sup> March, 2017	31 <sup>st</sup> March, 2016
	₹	₹
U/S 35AC	17,96,98,360	11,57,08,625
U/S 80G	3,45,72,543	2,68,35,581
UNDER FCRA	1,42,96,598	53,52,185
OTHER DONATIONS	68,78,690	1,04,700
GENERAL DONATION	1,14,30,636	3,11,98,479
<b>TOTAL</b>	<b>24,68,76,827</b>	<b>17,91,99,570</b>

### Schedule C: Reimbursement of Cooking Charges

Particular	31 <sup>st</sup> March, 2017	31 <sup>st</sup> March, 2016
	₹	₹
REIMBURSEMENT OF COOKING CHARGES	55,70,04,542	64,07,86,794
<b>TOTAL</b>	<b>55,70,04,542</b>	<b>64,07,86,794</b>

**Schedule D – 1: Other Income**

Particular	31 <sup>st</sup> March, 2017	31 <sup>st</sup> March, 2016
	₹	₹
BANK INTEREST	1,06,53,426	86,29,372
I.T. REFUND INCL. INTEREST	8,66,570	-
INTEREST ON ELECTRICITY	-	4,421
CANTEEN COLLECTION	17,03,219	-
INTEREST ON FDR	1,02,28,655	75,24,764
INT. – JALGAON JANTA SAHKARI BANK	-	1,050
MISC. INCOME	3,75,035	49,871
PROFIT ON SALE OF ASSET	3,87,213	-
GAS REIMBURSEMENT / GAS SUBSIDY	1,833	4,75,176
TRANSPORT CHARGES REIMBURSEMENT	6,75,435	10,85,165
RETURN WASTAGE FOOD	1,12,700	92,000
REBATE & DISCOUNT	470	12,151
SALE OF WASTAGE	5,48,074	-
SCRAP SALE	16,52,785	17,67,403
<b>TOTAL</b>	<b>2,72,05,415</b>	<b>1,96,41,373</b>

**Schedule D – 2: Receipts from Food to Hospital Patients**

Particular	31 <sup>st</sup> March, 2017	31 <sup>st</sup> March, 2016
	₹	₹
RECEIPT FROM BILLING AT COOPER HOSPITAL	10,23,386	-
RECEIPT FROM BILLING AT GTB HOSPITAL	1,79,48,895	-
<b>TOTAL</b>	<b>1,89,72,281</b>	<b>-</b>

**Schedule E: Food Purchasing and preparation Cost**

Particular	31 <sup>st</sup> March, 2017	31 <sup>st</sup> March, 2016
	₹	₹
FOOD PURCHASE AND COOKING EXP	37,60,09,930	34,04,77,409
BOILER / GENERATOR EXPENSES	1,15,73,090	2,67,44,360
DIESEL / WOOD BOILER/GAS EXPENSES	1,91,50,860	4,20,76,512
CARRIAGE, WEIGHTING & STORAGE	3,610	-
GENERAL INSURANCE	9,775	-
LABOUR CHARGES	9,16,832	2,06,084
UNIFORM EXPENSES	6,27,817	10,69,685
WATER /FOOD/ RICE TESTING & CLEANING CHARGES	35,42,449	47,34,285
WATER TANK CLEANING CHARGES	32,660	21,290
ELECTRICITY AND WATER CHARGES	86,11,562	67,11,097
WAREHOUSING CHARGES	16,23,485	12,72,566
ESIC EXPENSES	86,891	1,37,202
<b>TOTAL</b>	<b>42,21,88,961</b>	<b>42,34,50,490</b>

**Schedule F: Food Distribution Cost**

Particular	31 <sup>st</sup> March, 2017	31 <sup>st</sup> March, 2016
	₹	₹
VEHICLE FUEL INCLUDING MAINTENANCE	5,43,34,458	4,19,05,008
TRANSPORTATION & DISTRIBUTION (INCL. LOADING AND UNLOADING, RATES)	1,64,65,934	3,74,96,396
VEHICLE REGISTRATION & OTHER EXPENSES	31,750	20,36,777
VEHICLE INSURANCE	21,66,877	12,71,455
TRAVELLING EXPENSES ( INCL. REIMBURSEMENT)	3,89,169	-
CONTRACT CHARGES FOR DRIVER	2,60,65,390	-
PARKING CHARGES	1,65,960	4,01,000
VOLUNTEER WELFARE EXPENSE	46,85,640	37,87,540
VOLUNTEER EXPENSE	4,08,541	17,16,260
<b>TOTAL</b>	<b>10,47,13,719</b>	<b>8,86,14,435</b>

**Schedule G: Kitchen Related Expenses**

Particular	31 <sup>st</sup> March, 2017	31 <sup>st</sup> March, 2016
	₹	₹
KITCHEN REP. AND MAINTENANCE	1,35,34,724	44,39,428
KITCHEN CONSUMABLES	1,08,49,860	78,89,489
RENT (INCL' RENT AND TAXES FOR KITCHEN)	1,72,71,359	1,76,77,395
RE-IMBURSEMENT OF SERVICE TAX ON RENT	-	1,78,136
SALARY / BONUS	4,02,12,308	4,01,10,347
TOLL AND FREIGHT CHARGES	34,06,063	22,38,094
LAUNDRY EXPENSES	2,42,448	2,09,649
KITCHEN GARDEN	6,865	12,022
HOUSE KEEPING CHARGES	18,39,860	66,890
KITCHEN PROMOTION EXPENSES	200	-
WASTE WATER DISPATCH CHARGES	3,60,650	5,44,394
WASTE DISPOSAL LIFTING CHARGES	18,800	-
WASHING ALLOWANCE TO COOKS	68,106	61,050
CONTRACT CHARGES FOR STAFF	11,20,74,024	10,96,67,552
INSURANCE OF ASSETS	5,455	-
INSURANCE OF EMPLOYEES (WORKMEN COMP.)	-	35,355
GRINDING CHARGES	21,860	6,30,280
<b>TOTAL</b>	<b>19,99,12,581</b>	<b>18,37,60,081</b>

**Schedule H: Office and Admin. Cost**

Particular	31 <sup>st</sup> March, 2017	31 <sup>st</sup> March, 2016
	₹	₹
ADVERTISEMENT EXPENSE	6,55,457	2,50,839
ADVANCE NOT RECOVERABLE	4,530	-
AMC (CCTV CAMERA / GEN. SET)	2,39,159	39,871
AUDIT FEES	10,400	6,934
ACCOUNTING CHARGES	20,000	15,000
BANK CHARGES	4,81,600	4,80,917
CONVEYANCE	12,31,543	13,32,326
COURIER & POSTAGE CHARGES	4,60,960	17,84,895
CONSULTANCY / FINANCE CHARGES	18,67,698	9,53,292
CHALLAN EXPENSES	-	300
COMPUTER EXPENSES	3,91,469	3,90,032
COMMISSION ON ONLINE DONATION	1,18,191	-
CALIBRATION CHARGES	9,143	8,732
ELECTRICAL EXPENSE	16,21,711	18,43,499
ESIC EMPLOYERS SHARE 2015-16	2,138	-
ESIC EMPLOYERS SHARE 2016-17	1,49,067	-
WADA EXPENSES	13,75,000	2,15,491
FIRE EXTINGUISHER	8,080	4,300

**Schedule H: Office and Admin. Cost (Contd.)**

Particular	31 <sup>st</sup> March, 2017	31 <sup>st</sup> March, 2016
	₹	₹
FUND RAISING EXPENSES	1,22,55,416	1,20,247
FESTIVALS & DEITY EXPENSES	2,40,898	4,08,071
GIFT EXPENSES	1,49,099	2,39,634
GUEST WELFARE	3,45,392	3,05,492
INTEREST ON LOAN	22,39,463	5,52,083
INTEREST ON OVERDRAFT – HDFC	21,24,241	-
INTEREST ON TDS/PT	23,995	1,90,985
IFRF CENTRAL COMMITTEE	6,000	-
LATE PAYMENT CHARGES – TDS	361	-
LEGAL CHARGES	16,464	49,517
LICENCE RENEWAL CHGS	-	35,670
LOSS ON SALE OF ASSETS	13,79,826	2,04,894
LOAN PROCESSING CHARGES	-	2,12,130
SUNDRY BALANCE W/OFF	9,93,670	1,250
TRANSACTION CHARGES	-	1,55,887
MISCELLANEOUS EXPENSE	66,520	24,794
COOPER BRANCH EXPENSES	-	5,96,343
MEDICAL EXP.	2,81,172	3,47,969
OFFICE EXPENSES	1,16,15,680	1,47,53,083
OFFICE VOLUNTEER EXPENSES	2,54,051	-
INSURANCE CHARGES	-	2,978
PF PENALTY	31,149	-
PACKING MATERIAL	30,951	1,94,909
PEST CONTROL EXPENSES	20,89,870	-
PRINTING & STATIONERY	20,56,480	25,31,428
PROFESSIONAL CHARGES	68,56,337	90,50,275
PUBLIC RELATION EXPENSE	7,28,909	16,88,798
PROVIDENT FUND EMPLOYEE CONT.	-	76,890
PROVIDENT FUND EMPLOYER CONT.	13,13,033	13,13,033
PF EMPLOYERS SHARE 2015-16	25,709	-
PF EMPLOYERS SHARE 2016-17	9,72,764	-
PREACHING EXPENSES	36,020	-
RATES & TAXES	4,84,546	-
REPAIRS & MAINTENANCE	39,70,658	51,64,333
ROUND OFF	104	-
SALARY	29,52,170	-
STATUTARY PAYMENTS	1,33,385	4,71,161
STAFF WELFARE	13,31,992	10,74,126
SECURITY CHARGES	1,01,91,625	81,74,413
TELEPHONE / MOBILE & INTERNET CHARGES	13,71,009	15,45,396
TEMPLE MAINT. & DEITY EXPENSES	93,267	47,061
TDS DEMAND PAID	10,400	15,490
TESTING CHARGES	-	34,565
TRAVELLING & OTHER INCIDENTAL EXPENSES	6,68,121	9,88,353
TRAINING EXPENSES	-	19,905
<b>TOTAL</b>	<b>7,46,73,859</b>	<b>-</b>



**Schedule I: Loans (Liability)**

Particular	31 <sup>st</sup> March, 2017	31 <sup>st</sup> March, 2016
	₹	₹
ADVANCE FROM DEEO	1,51,12,000	1,51,12,000
ADVANCE FROM PRIMARY EDUCATION BOARD	50,00,000	50,00,000
DEATH BENEFIT FUND	41,330	-
ISKCON TEMPLE TIRUPATI	1,61,63,801	1,20,09,118
LOAN FROM STATE BANK OF INDIA	36,26,904	48,00,837
ISKCON TEMPLE – JAIPUR	4,16,000	4,16,000
ISKCON TEMPLE – NELLORE	10,28,625	10,28,625
ISKCON TEMPLE – DELHI	42,95,348	42,95,348
ISKCON TEMPLE – KOLKATA	-	53,104
ISKCON TEMPLE – RAJAHMUNDRY	67,76,180	84,50,750
LOAN FROM SHRIRAM CITY UNION FINANCE LTD.	2,084	27,084
LOAN FROM TATA FOR VEHICLE – UJJAIN	-	32,442
LOAN FOR VEHICLE – DELHI	4,87,534	6,29,331
LOAN FROM SOUTH INDIAN BANK – (CAR) KOLKATA	-	2,57,348
<b>TOTAL</b>	<b>5,29,49,806</b>	<b>5,21,11,987</b>

**Schedule J: Other Current Liabilities**

Particular	31 <sup>st</sup> March, 2017	31 <sup>st</sup> March, 2016
	₹	₹
OTHER LIABILITIES	48,85,990	1,45,56,476
<b>TOTAL</b>	<b>48,85,990</b>	<b>1,45,56,476</b>

**Schedule K: Branch Transfers**

Particular	31 <sup>st</sup> March, 2017	31 <sup>st</sup> March, 2016
	₹	₹
BRANCH DIVISION	63,16,802	-
<b>TOTAL</b>	<b>63,16,802</b>	<b>-</b>

**Schedule L: Stock**

Particular	31 <sup>st</sup> March, 2017	31 <sup>st</sup> March, 2016
	₹	₹
OPENING STOCK	1,02,32,831	87,21,330
CLOSING STOCK	1,67,00,323	1,02,32,831
<b>NET INCREASE / DECREASE IN STOCK</b>	<b>64,67,492</b>	<b>15,11,500</b>

**Schedule M: Investments**

Particular	31 <sup>st</sup> March, 2017	31 <sup>st</sup> March, 2016
	₹	₹
FD WITH DCB	16,48,127	44,575
FD WITH HDFC BANK	1,43,79,170	2,35,93,418
FD WITH HDFC FINANCE LTD	1,00,95,186	5,48,26,500
FD WITH KOTAK BANK	11,00,000	11,00,000
FD WITH IDBI – DELHI	70,21,698	33,60,473
FD WITH SOUTH INDIAN BANK – KOLKATA	11,00,734	25,64,746
FD WITH YES BANK – KOLKATA	63,74,201	29,61,345
INVESTMENT IN FIXED DEPOSIT – UJJAIN	-	2,23,210
<b>TOTAL</b>	<b>4,17,19,116</b>	<b>8,86,74,267</b>

**Schedule N: Current Assets, Loans & Advances**

Particular	31 <sup>st</sup> March, 2017	31 <sup>st</sup> March, 2016
	₹	₹
SECURITY DEPOSITS	34,52,003	78,18,781
ELECTRICITY DEPOSITS	2,54,628	1,43,930
GAS DEPOSITS	5,78,286	6,71,956
TELEPHONE DEPOSITS	31,593	30,243
BANK GUARANTEE – AMC – FD	11,56,018	10,65,543
CENTRAL WORK SHOP	11,22,060	11,88,178
TDS RECEIVABLE	16,21,574	19,56,025
OTHER LOANS AND ADVANCES & DEPOSITS	1,25,35,968	2,13,15,414
CMT DEPT – NEW ACCOUNT- CURRENT ASSET	-	2,00,000
GUNTUR BALANCE – LOAN – CURRENT ASSEST	1,00,000	1,00,000
HONORARIUM RECEIVABLE	-	1,05,000
CASH BALANCES	9,43,769	10,34,269
AXIS BANK A/C NO. 07041 (RAJAMUNDHRY)	7,760	26,90,809
AXIS BANK A/C NO. 0788 (TIRUPATI)	1,59,908	8,63,552
AXIS – MAHARASHTRA	2,05,188	-
AXIS A/C NO. 2312 (UJJAIN)	(402)	6,498
CANARA BANK A/C NO. 1413 (NELLORE)	4,57,058	6,097
DCB BANK – MAHARASHTRA	51,751	1,30,560
DHANLAKSHMI BANK – MAHARASHTRA	78,784	75,716

**Schedule N: Current Assets, Loans & Advances (Contd.)**

Particular	31 <sup>st</sup> March, 2017	31 <sup>st</sup> March, 2016
	₹	₹
HDFC – MAHARASHTRA	1,10,65,383	9,51,358
HDFC – JUHU	1,12,116	1,06,788
HDFC – 412	1,03,607	10,15,962
HDFC – FUND RAISING-MAHARASHTRA	43,007	40,370
HDFC – FCRA-MAHARASHTRA	48,87,306	12,16,059
ICICI – A/C NO. 5999 JAIPUR BRANCH	-	100
ICICI – A/C NO. 891 JAIPUR BRANCH	26,655	9,219
ICICI BANK A/C NO. 000193 (GURGAON)	67,12,753	74,15,952
ICICI BANK A/C NO. 000300 (PALWAL)	6,68,164	35,91,190
ICICI BANK A/C NO. 32574 JAMSHEDPUR	10,95,313	18,78,466
ICICI BANK A/C. 00002 KURUKSHETRA	1,97,707	(13,18,589)
ICICI BANK A/C. 0878 KURUKSHETRA	1,30,00,000	-
ICICI A/C NO. 5111 – DELHI BRANCH	2,57,326	2,73,877
ICICI A/C NO. 9378 – DELHI BRANCH	11,898	33,958
ICICI A/C NO. 6827 MAHARASHTRA	1,84,014	1,18,302
ICICI A/C NO. 5734 MAHARASHTRA	9,242	8,881
ICICI A/C NO. 2839 NOIDA	45,398	43,622
ICICI BANK A/C NO. 0253 – FARIDABAD BRANCH	11,39,304	-
ICICI BANK A/C NO. 0253 – FARIDABAD BRANCH	-	44,53,788
IDBI A/C NO. 45008 DELHI BRANCH	25,27,839	11,51,571
IDBI A/C NO. 1748 – UJJAIN	29,811	1,04,721
IDBI A/C MAHARASHTRA	24,996	23,987
KOTAK BANK	6,50,690	5,47,003
PNB – 5700 JAIPUR	2,037	5,753
PNB A/C NO. 4581 – UJJAIN	6,05,817	5,14,798
RBL – MAHARASHTRA	30,783	29,236
SOUTH INDIAN BANK – 8644 KOLKATA	3,32,606	6,61,761
SBBJ – JAIPUR BRANCH	-74,392	(13,80,769)
SBI A/C. NO. 6723 (KADAPA)	2,621	12,21,623
SBI A/C. NO. 3220 (TIRUPATI)	25,77,633	1,40,39,622
SBI BANK A/C. NO. 9489 (NELLORE)	43,19,131	26,72,798
SBI – MAHARASHTRA	68,800	8,08,586
SBI – KOLKATTA	8,735	44,510
YES BANK – MAHARASHTRA	18,98,591	-
YES BANK A/C NO. 0194 – KOLKATA	31,16,667	7,31,162
YES BANK A/C NO. 013 – DELHI BRANCH	58,056	1,74,935
YES BANK A/C NO. 0033 – FARIDABAD BRANCH	84,49,854	4,76,13,863
FARIDABAD A/C NO. 0878	6,53,15,903	-
YES BANK A/C NO. 0521 – JAMSHEDPUR	4,02,845	-
YES BANK A/C NO. 0058 – PALWAL BRANCH	78,92,994	1,48,94,835
PALWAL BANK A/C NO. 0878	1,20,00,000	-
YES BANK A/C NO. 0298 (CENTRAL COMM)	57,934	37,412
YES BANK A/C NO. 0274 (CENTRAL COMM)	28,514	26,869
YES BANK A/C NO. 0878 (GURGAON)	4,20,19,990	-
YES BANK A/C NO. 0072 (GURGAON)	7,23,958	3,08,74,196
YES BANK A/C NO. 0060 – KURUKSHETRA	47,61,915	1,49,19,967
<b>TOTAL</b>	<b>15,78,34,327</b>	<b>18,89,60,308</b>

**Schedule O: Fixed Assets**

Particular	31 <sup>st</sup> March, 2017	31 <sup>st</sup> March, 2016
	₹	₹
OPENING BALANCE	23,61,28,097	22,19,22,972
ADD: ADDITION DURING THE YEAR	6,77,84,724	5,44,64,201
LESS: DELETION DURING THE YEAR	1,60,84,926	29,84,393
PROFIT / LOSS DURING THE YEAR	(4,35,692)	-
LESS: DEPRECIATION	4,02,72,104	3,72,74,683
<b>CLOSING WDV OF FIXED ASSETS</b>	<b>24,71,20,099</b>	<b>23,61,28,098</b>

**Schedules to Accounts Ended 31<sup>st</sup> March, 2017**

31 <sup>st</sup> March, 2016	Particular	31 <sup>st</sup> March, 2017
	<b>INCOME &amp; EXPENDITURE A/C</b>	
<b>(14,52,71,240)</b>	BALANCE B/D	<b>(9,51,62,597)</b>
18,335	DIFFERENCE IN OPENING BALANCE	2,33,152
(13,314)	ADD: ADJUSTMENTS – MAHARASHTRA	(2,92,032)
(66,023)	LESS: BRANCH TRANSFER	(63,16,802)
5,01,21,957	ADD: CURRENT SURPLUS / (DEFICIT)	1,47,65,329
<b>(9,52,10,285)</b>	<b>TOTAL</b>	<b>(8,67,72,950)</b>

**Adjustments Considered in Maharashtra**

<b>INCOME EXPENDITURE ADJUSTMENTS</b>	
TDS ON CONTRACTOR – NIGDI	(1,385)
TDS ON CONTRACTOR – COOPER	1,207
INT. ON TDS – NIGDI	72
INT. ON TDS – FCRA	3,000
INT. ON TDS – AURANGABAD	308
RESERVES & SURPLUS – TARDEO	2,88,833
ADJ.	(3)
	2,92,032

### f) Fund Flow Statement for Year Ended 31<sup>st</sup> March, 2017

Sr. No.	Particular	Amount	Amount
<b>1</b>	<b>CASH &amp; BANK BALANCE</b>		
	<b>As on 1-4-2016</b>		
	CASH	10,34,269	
	BANK BALANCE	15,33,30,970	<b>15,43,65,239</b>
<b>2</b>	<b>INFLOWS / RECEIPTS</b>		
	CORPUS DONATION	20,88,830	
	DONATIONS RECEIVED	24,68,76,827	
	REIMBURSEMENT FROM GOVT. AUTHORITIES	55,70,04,542	
	RECEIPTS FROM FOOD TO HOSPITAL PATIENTS	1,89,72,281	
	OTHER INCOME	2,72,05,415	
	FIXED DEPOSITS MATURED	4,69,55,151	
	INCREASE IN LOANS TAKEN	8,37,819	
	LOAN & ADVANCES RECOVERED	1,37,42,939	91,36,83,804
	<b>TOTAL INFLOWS</b>		<b>1,06,80,49,042</b>
<b>3</b>	<b>OUTFLOWS / PAYMENTS</b>		
	FOOD COST & DISTRIBUTIONS	52,69,02,680	
	KITCHEN RELATED OVERHEADS	19,99,12,581	
	OTHER EXP. INCL. OF ADMINISTRATIVE EXP.	7,46,73,859	
	CAPITAL EXPENDITURE (NET)	5,12,64,107	
	OTHER LIABILITIES PAID OFF & INTER BRANCH ADJ	1,59,98,480	
	<b>TOTAL OUT FLOWS</b>		<b>86,87,51,707</b>
	<b>CASH &amp; BANK ON 31-3-2017</b>		<b>19,92,97,335</b>

## 5 – Financial Statements of FCRA Accounts – Consolidated All India

### a) Auditor's Report

#### Auditors Certificate as per Form FC-4 (of the Foreign Contributions Regulations Rules, 2011)

I have audited the Accounts of **ISKCON FOOD RELIEF FOUNDATION, 7, K.M. MUNSHI MARG, CHOWPATTY MUMBAI 400 004** (having its Head Office at – 19, Jayant Industrial Estate, Tardeo Road, Mumbai 400 034) **REGISTRATION NO. E – 21854, MAHARASHTRA**, for the year ending 31<sup>st</sup> March, 2017 and examined all relevant books and vouchers and certify that according to audited account –

1. The brought forward contributions at the beginning of the year ended on 31<sup>st</sup> March, 2017 was ₹ 12,16,059/-.
2. Foreign contribution of/worth ₹ **1,87,96,598/- (Local donation ₹ 45,96,284/- & Foreign donation ₹ 1,42,00,314/-)** was received by the Association during the year ended on 31<sup>st</sup> March, 2017.
3. Interest accrued on foreign contribution and other income derived from foreign contribution or interest thereon of/worth are ₹ **39,467/-** (Saving bank interest of ₹ **39,467/-**) and other receipts of ₹ **574/-** was received by the Association during the financial year 2016-17.
4. The balance of unutilised foreign contribution with the Trust as at the end of the year ended on 31<sup>st</sup> March, 2017 was ₹ **48,87,306/- (Balance in HDFC Bank A/c No. 0029)**.
5. Certified that the Association has maintained the accounts of foreign contributions and records relating thereto in the manner specified in Section 19 of the Foreign Contributions (Regulations) Act, 2010 (42 of 2010) read with rule 16 of the Foreign Contributions (Regulations) Rules, 2011.
6. The information furnished in this certificate and in the enclosed Balance Sheet and the statement of receipts and payments is correct as checked by me.
7. The association has utilised the foreign contribution received for the purpose(s) it is registered/granted prior permission under Foreign Contribution (Regulation) Act, 2010.

Place: Mumbai  
Date: 31<sup>st</sup> December, 2017

Signature of Chartered Accountants  
For Girish S. Watwe & Associates  
Chartered Accountants

**Girish S. Watwe**  
Proprietor  
Membership No. 41757

## b) Balance Sheet as at 31<sup>st</sup> March, 2017

Liabilities	Amount	Amount	Assets	Sch	Amount	Amount
<b>INCOME &amp; EXPENDITURE A/C</b>			<b>FIXED ASSETS</b>	<b>A</b>		1,18,38,572
BAL. B/D.	35,82,968		(SCHEDULE ATTACHED)			
<b>LESS</b>			<b>CASH &amp; BANK BALANCE</b>			
ADJ. – INTEREST ON TDS	(3,000)		CASH IN HAND		-	
SURPLUS FOR THE YEAR	1,31,45,335	1,67,25,303	HDFC BANK		48,87,306	48,87,306
<b>CURRENT LIABILITIES</b>						
TDS ON COMMISSION / BROKERAGE		574				
<b>TOTAL</b>		<b>1,67,25,877</b>	<b>TOTAL</b>			<b>1,67,25,877</b>

In terms of our report attached.  
For Girish S. Watwe & Associates  
Chartered Accountants

For and on behalf of  
ISKCON Food Relief Foundation

**Girish S. Watwe**  
Proprietor  
Membership No. 41757  
Place: Mumbai  
Date: 28<sup>th</sup> June, 2017

**Dr. Ravindra Khatanhar**  
Administrative Advisor

### c) Income & Expenditure Account for the Year Ended 31<sup>st</sup> March, 2017

EXPENDITURE	SCH.	AMOUNT	INCOME	SCH	AMOUNT
FOOD PURCHASING & PREPARATION COST	D	35,66,047	FCRA DONATION		1,42,96,598
KITCHEN RELATED OVERHEADS	E	4,714	DONATION U/S 35AC		45,00,000
OFFICE & ADMINISTRATION EXPENSES	F	30,810	OTHER INCOME	C	39,467
DEPRECIATION	A	20,89,160			
<b>SURPLUS FOR THE YEAR</b>		<b>1,31,45,335</b>			
<b>TOTAL</b>		<b>1,88,36,065</b>	<b>TOTAL</b>		<b>1,88,36,065</b>

In terms of our report attached.  
For Girish S. Watwe & Associates  
Chartered Accountants

For and on behalf of  
ISKCON Food Relief Foundation

**Girish S. Watwe**  
Proprietor  
Membership No. 41757  
Place: Mumbai  
Date: 28<sup>th</sup> June, 2017

**Dr. Ravindra Khatanhar**  
Administrative Advisor



**d) Schedules****Schedule: C**

## Other Income

<b>PARTICULARS</b>	<b>AMOUNT</b>
BANK INTEREST	39,467
<b>TOTAL</b>	<b>39,467</b>

**Schedule: D**

## Food Purchasing &amp; Preparation Cost

<b>PARTICULARS</b>	<b>AMOUNT</b>
RAW MATERIAL PURCHASE (FOOD)	34,55,482
VEHICLE INSURANCE	1,10,565
<b>TOTAL</b>	<b>35,66,047</b>

**Schedule: E**

## Kitchen Related Overheads

<b>PARTICULARS</b>	<b>AMOUNT</b>
COMMISSION	4,714
<b>TOTAL</b>	<b>4,714</b>

**Schedule: F**

## Office &amp; Administration Expenses

	<b>AMOUNT</b>
BANK CHARGES AND COMMISSION	30,810
<b>TOTAL</b>	<b>30,810</b>

### Schedule: A

#### Fixed Assets

Sr. No.	Name of the Assets	Dep. Rate %	Balance as on 4 <sup>th</sup> January, 2016	Additions/ Adjustment during the Year	Deductions during the Year	Total	Dep.	Balance as on 31 <sup>st</sup> March, 2017
1	VEHICLES	15%	23,66,910	95,60,822	-	1,19,27,732	17,89,160	1,01,38,572
2	KITCHEN INFRASTRUCTURE	15%	-	20,00,000	-	20,00,000	3,00,000	17,00,000
	<b>TOTAL</b>		<b>23,66,910</b>	<b>1,15,60,822</b>	<b>-</b>	<b>1,39,27,732</b>	<b>20,89,160</b>	<b>1,18,38,572</b>

#### e) Receipts & Payments for the year ended 31<sup>st</sup> March, 2017

RECEIPTS	AMOUNT	AMOUNT	PAYMENTS	AMOUNT	AMOUNT
<b>BALANCE AS ON 1-4-2016</b>			<b>EXPENSES</b>		
CASH IN HAND			RAW MATERIAL PURCHASE (FOOD)	34,55,482	
HDFC BANK	12,16,059	12,16,059	VEHICLE INSURANCE	1,10,565	
			COMMISSION	4,714	
<b>DONATIONS</b>		1,87,96,598	BANK CHARGES AND COMMISSION	30,810	36,01,571
<b>OTHER INCOME</b>			ADDITION TO FIXED ASSET		1,15,60,822
BANK INTEREST		39,467			
			SUNDRY CREDITORS W/OFF		3,000
TDS ON BROKERAGE / COMMISSION		574			
			<b>BALANCE AS ON 31<sup>ST</sup> MARCH, 2017</b>		
			CASH IN HAND	-	
			HDFC BANK	48,87,306	48,87,306
<b>TOTAL</b>		<b>2,00,52,698</b>	<b>TOTAL</b>		<b>2,00,52,698</b>

For Girish S. Watwe & Associates  
Chartered Accountants

For and on behalf of  
ISKCON Food Relief Foundation

**Girish S. Watwe**  
Proprietor  
Membership No. 41757  
Place: Mumbai  
Date: 28<sup>th</sup> June, 2017

**Dr. Ravindra Khatanhar**  
Administrative Advisor

## 15 – Our Branch Managers

<b>Branch Managers</b>	<b>Branch</b>	<b>Contact Details</b>
Mr. Prakash Nanjundiah	Tardeo	9324209466
Mr. Sudarshan Potbhare	Aurangabad	9619864055
Mr. Raju Nair	Palghar	9324548566/ 02525-240774
Mr. Mahendra Subedi	Nigdi	9922950823
Mr. Sunil Perti	Mira Bhayander	9920521876/ 022-28455357
Mr. Raju Nair	Wada	9324548566/ 02525-240774
Mr. Joginder Pradhan	Faridabad	9312931093
Mr. Jayant Gulati	Palwal	9215839802
Mr. Om Prakash Singh	Gurgaon	9990021148
Mr. Balwan Singh	Kurukshetra	9215839815
Mr. Vivek Mandloi	Ujjain	9425491374
H.G. Vakreshwar Govinda Das	Tirupati	7799747518
Mr. S. Ramaraju	Kadapa	9704544467
H.G. Satya Gopinath Das	Rajahmundry	9441100815
H.G. Chandrakeshav Das	Nellore	90528 19090
Mr. G. Narsimha Reddy	Ranga Nara Gadda	9949133313
Mr. Sanjeet K. Sharma	Jaipur	9680197400/ 9718100000
Mr. Sanjeet K. Sharma	Delhi	9680197400/ 9718100000
Mr. Mithun Naskar	Kolkata	9831046554
Mr. Shanto Chatterjee	Jamshedpur	8051195790/ 9873009943

A C C E S S I B L E  
N O U R I S H I N G  
N U T R I T I O U S  
A M A Z I N G  
M I D D A Y  
R E G U L A R  
I N S P I R I N G  
T A S T Y  
A S S O R T E D

